

KC PREMIERE MAYB TOURNAMENT

11TH/12TH GRADE GIRLS DIVISION

POOL A

- (1) LADY TIGERS
- (2) KANSAS ELITE
- (3) KC SHOCK

<u>WINS</u>	<u>LOSSES</u>
I	I
	II
II	

POOL B

- (1) MO MAVERICKS
- (2) KS DREAM TEAM
- (3) MO RAGE

<u>WINS</u>	<u>LOSSES</u>
	II
II	
I	I

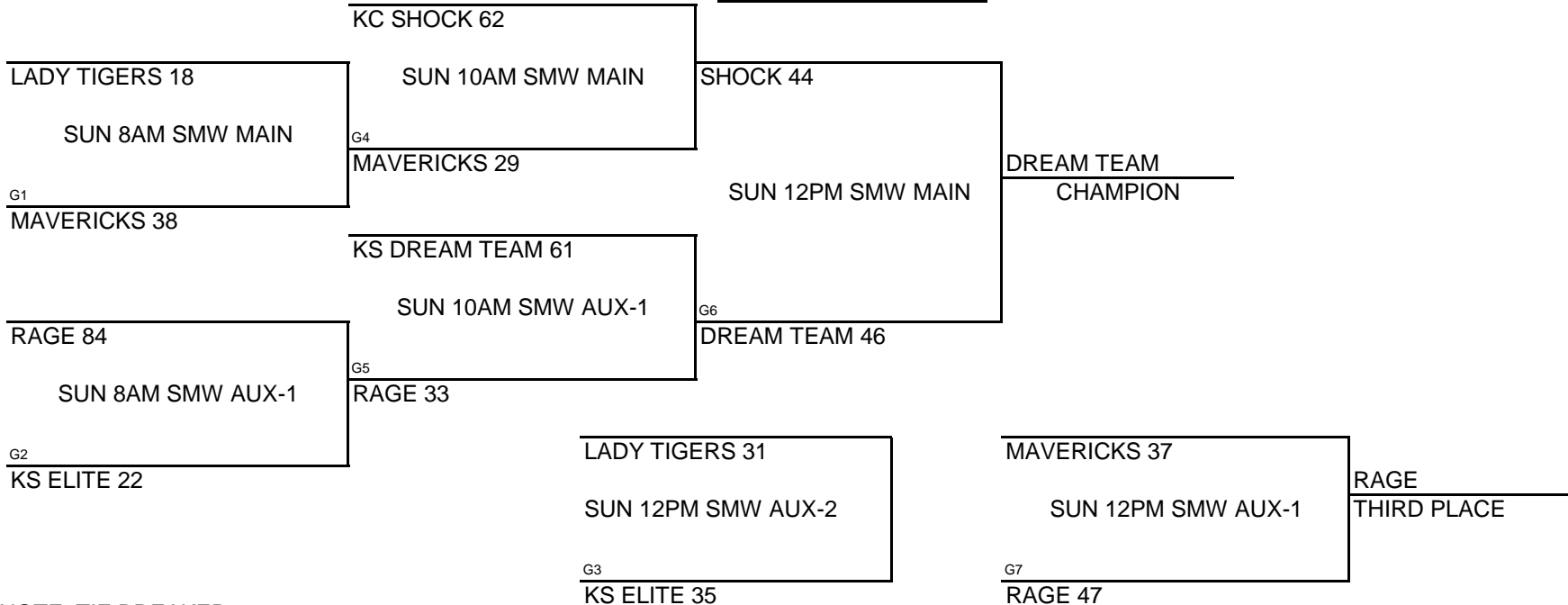
POOL PLAY ROUND 1

	<u>DAY</u>	<u>TIME</u>	<u>LOCATION</u>		<u>DAY</u>	<u>TIME</u>	<u>LOCATION</u>
A-1 VS A-2	SAT	12PM	SMW MAIN 45-38	B-1 VS B-2	SAT	12PM	SMW AUX-1 33-50
A-1 VS A-3	SAT	2PM	SMW MAIN 12-81	B-1 VS B-3	SAT	2PM	SMW AUX-1 29-60
A-2 VS A-3	SAT	4PM	SMW MAIN 30-100	B-2 VS B-3	SAT	4PM	SMW AUX-1 56-28

SEEDING ROUND

KC SHOCK 47	VS	KS DREAM TEAM 33	SAT	6PM	SMW MAIN	Winner gets 1st seed, Loser gets 2nd seed Winner gets 3rd seed, Loser gets 4th seed Winner gets 5th seed, Loser gets 6th seed
LADY TIGERS 14	VS	RAGE 75	SAT	6PM	SMW AUX-1	
KS ELITE 44	VS	MAVERICKS 62	SAT	6PM	SMW AUX-2	

CHAMPIONSHIP ROUND



NOTE: TIE BREAKER

- 1 - HEAD TO HEAD
- 2 - POINT SPREAD (MAX. 15 POINTS)
- 3 - DEF. POINTS ALLOWED

KC PREMIERE MAYB TOURNAMENT

5TH/6TH GRADE BOYS DIVISION

POOL A

- (1) GABL ELITE 6
- (2) KC PREMIERE - CP
- (3) MID MO HEAT

<u>WINS</u>	<u>LOSSES</u>
I	I
	II
II	

POOL B

- (1) KC PREMIERE - LS
- (2) GABL ELITE 5
- (3) TOPEKA KINGS

<u>WINS</u>	<u>LOSSES</u>
II	
I	I
	II

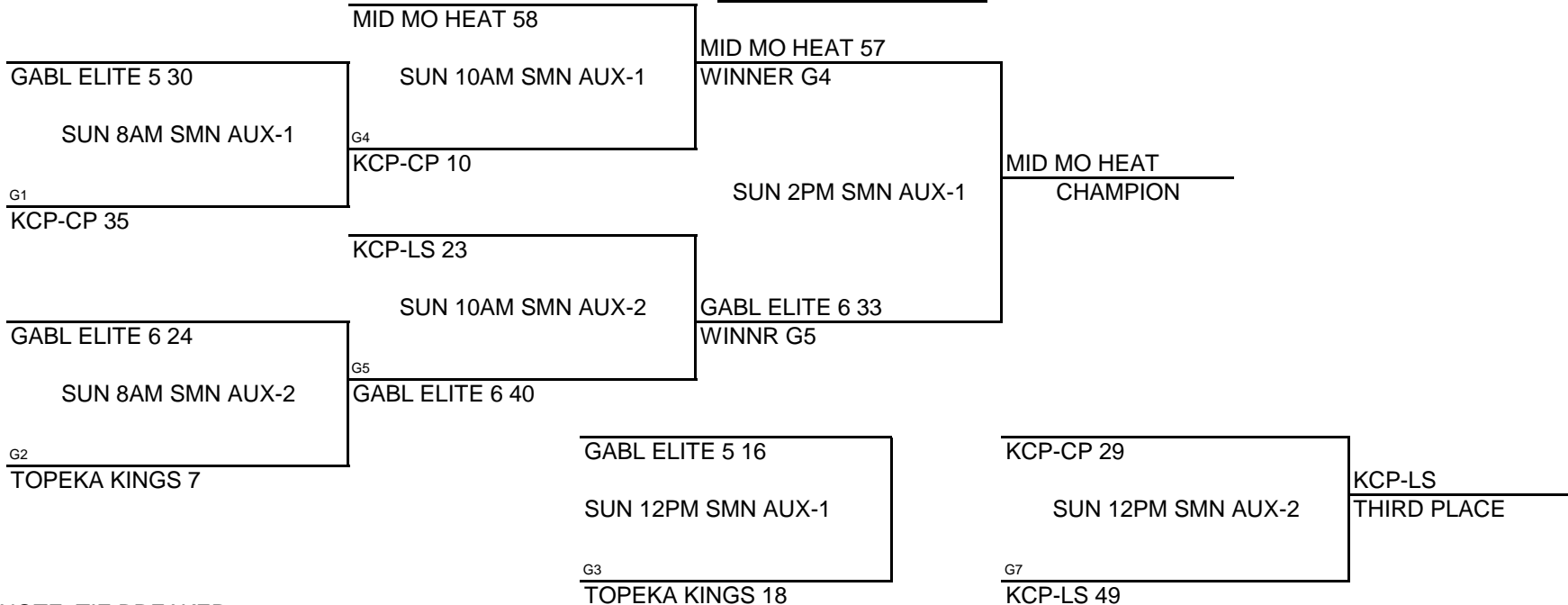
POOL PLAY ROUND 1

	<u>DAY</u>	<u>TIME</u>	<u>LOCATION</u>		<u>DAY</u>	<u>TIME</u>	<u>LOCATION</u>
A-1 VS A-2	FRI	8PM	SMN AUX-1 30-23	B-1 VS B-2	FRI	8PM	SMN AUX-2 48-18
A-1 VS A-3	SAT	3PM	SMN AUX-2 27-42	B-1 VS B-3	SAT	4PM	SMN AUX-2 49-6
A-2 VS A-3	SAT	5PM	SMN AUX-2 21-47	B-2 VS B-3	SAT	6PM	SMN AUX-2 39-10

SEEDING ROUND

MID MO HEAT 45 VS KCP-LS 32	SAT 8PM	SMN MAIN	Winner gets 1st seed, Loser gets 2nd seed
GABL ELITE 6 28 VS GABL ELITE 5 18	SAT 8PM	SMN AUX-1	Winner gets 3rd seed, Loser gets 4th seed
KCP-CP 36 VS TOPEKA 7	SAT 8PM	SMN AUX-2	Winner gets 5th seed, Loser gets 6th seed

CHAMPIONSHIP ROUND



NOTE: TIE BREAKER

1 - HEAD TO HEAD

2 - POINT SPREAD (MAX. 15 POINTS)

3 - DEF. POINTS ALLOWED

KC PREMIERE MAYB TOURNAMENT

5TH/6TH GRADE GIRLS DIVISION

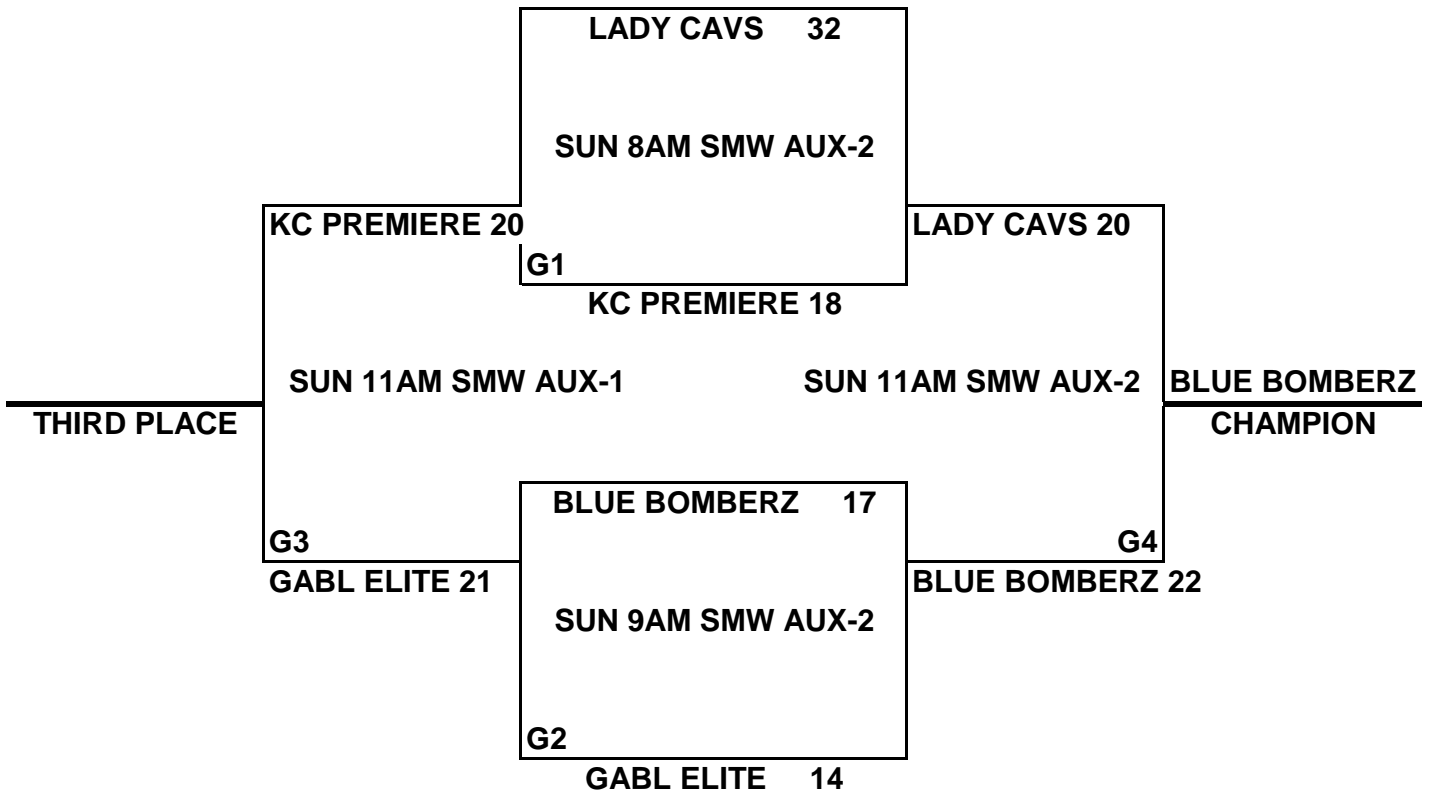
(1)	GABL ELITE
(2)	BLUE BOMBRZ - MO
(3)	KC PREMIERE
(4)	LADY CAVS

<u>WINS</u>	<u>LOSSES</u>
I	II
II	I
	III
III	

SCHEDULE

1	VS	2	12-16	SAT	12PM	SMW AUX-2
3	VS	4	5-35	SAT	1PM	SMW AUX-2
1	VS	3	31-17	SAT	2PM	SMW AUX-2
2	VS	4	19-20	SAT	3PM	SMW AUX-2
1	VS	4	28-32	SAT	4PM	SMW AUX-2
2	VS	3	33-20	SAT	5PM	SMW AUX-2

CHAMPIONSHIP ROUND



NOTE: TIE BREAKERS

1 - HEAD TO HEAD

2 - POINT SPREAD (MAX 15 POINTS)

3 - DEF. POINTS ALLOWED

KC PREMIERE MAYB TOURNAMENT

7TH/8TH GRADE GIRLS DIVISION

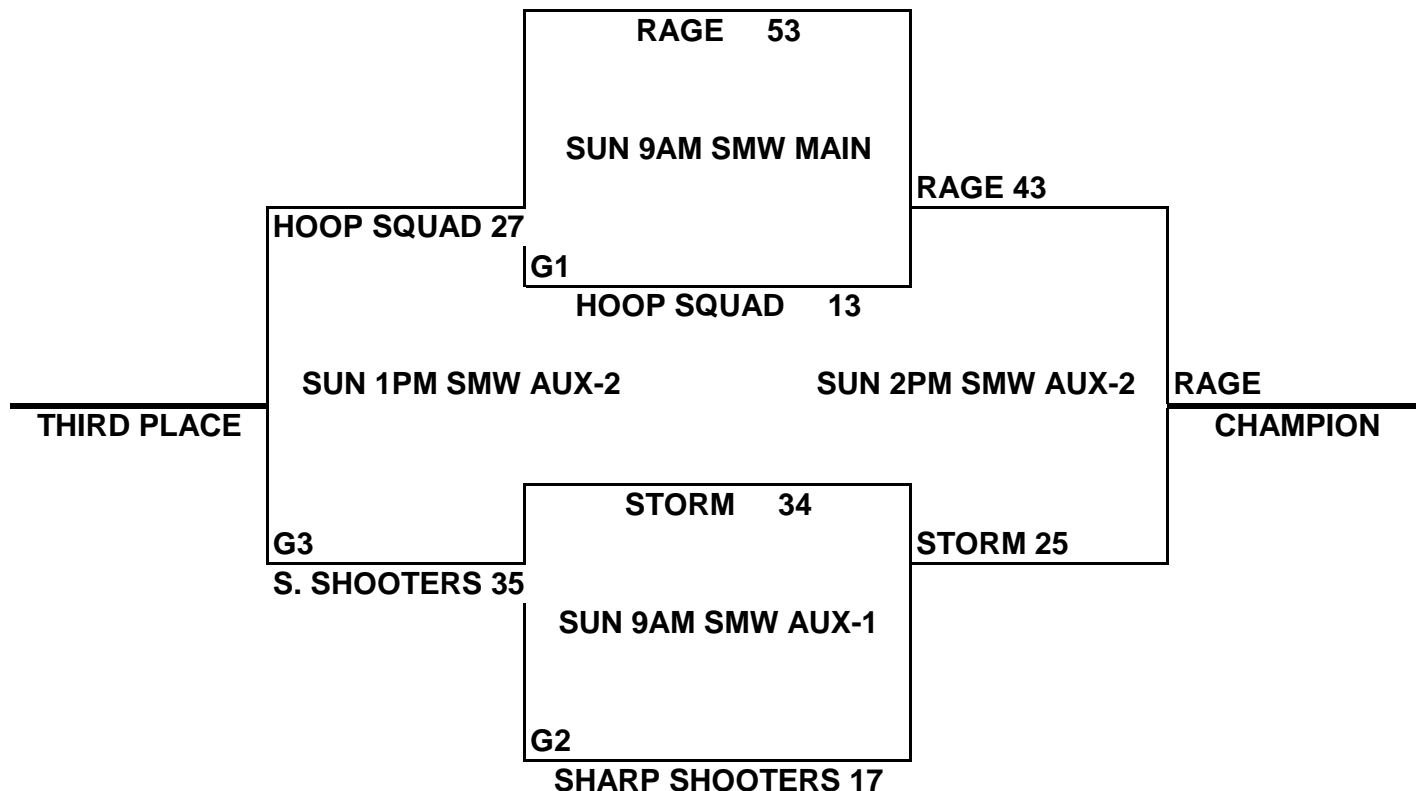
(1)	CENTRAL MO SHARP SHOOTERS
(2)	MMBC STORM
(3)	MO RAGE
(4)	HOOP SQUAD

<u>WINS</u>	<u>LOSSES</u>
I	II
II	I
III	
	III

SCHEDULE

1	VS	2	20-39	SAT	1PM	SMW MAIN
3	VS	4	54-11	SAT	1PM	SMW AUX-1
1	VS	3	13-48	SAT	3PM	SMW MAIN
2	VS	4	55-17	SAT	3PM	SMW AUX-1
1	VS	4	40-14	SAT	5PM	SMW MAIN
2	VS	3	27-50	SAT	5PM	SMW AUX-1

CHAMPIONSHIP ROUND



NOTE: TIE BREAKERS

1 - HEAD TO HEAD

2 - POINT SPREAD (MAX 15 POINTS)

3 - DEF. POINTS ALLOWED

KC PREMIERE MAYB TOURNAMENT

9TH GRADE BOYS BLUE DIVISION

POOL A

- (1) KC PREMIERE-CR
- (2) KC FALCONS
- (3) CTG WARRIORS

<u>WINS</u>	<u>LOSSES</u>
II	I
I	II
I	I

POOL B

- (1) KC BLUE DOGS
- (2) SHOW-ME SHOOTERS
- (3) LAWRENCE MAGIC

<u>WINS</u>	<u>LOSSES</u>
I	I
I	I
I	I

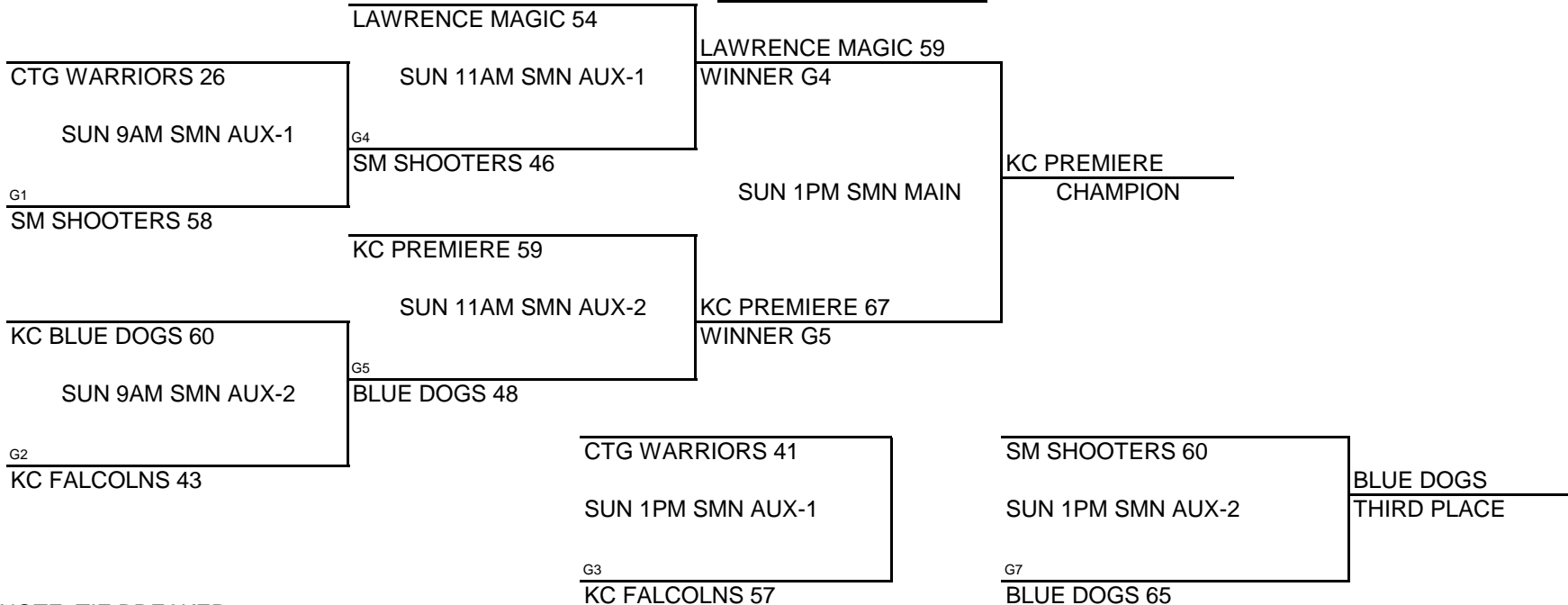
POOL PLAY ROUND 1

	<u>DAY</u>	<u>TIME</u>	<u>LOCATION</u>		<u>DAY</u>	<u>TIME</u>	<u>LOCATION</u>
A-1 VS A-2	FRI	9PM	SMN AUX-1 68-28	B-1 VS B-2	FRI	9PM	SMN AUX-2 52-36
A-1 VS A-3	SAT	4PM	SMN MAIN 76-29	B-1 VS B-3	SAT	4PM	SMN AUX-1 46-55
A-2 VS A-3	SAT	6PM	SMN MAIN 47-48	B-2 VS B-3	SAT	6PM	SMN AUX-1 54-53

SEEDING ROUND

KC PREMIERE 47 VS	LAW. MAGIC 53	SAT	8PM	SMW MAIN	Winner gets 1st seed, Loser gets 2nd seed
CTG WARRIORS 30 VS	KC BLUE DOGS 57	SAT	8PM	SMW AUX-1	Winner gets 3rd seed, Loser gets 4th seed
KC FALCOLNS 35 VS	SM SHOOTERS 68	SAT	8PM	SMW AUX-2	Winner gets 5th seed, Loser gets 6th seed

CHAMPIONSHIP ROUND



NOTE: TIE BREAKER

1 - HEAD TO HEAD

2 - POINT SPREAD (MAX. 15 POINTS)

3 - DEF. POINTS ALLOWED

KC PREMIERE MAYB TOURNAMENT

9TH/10TH GRADE BOYS RED DIVISION

POOL A

- (1) KC PREMIERE-KH
- (2) GREYHOUNDS
- (3) KIWI-TEK

<u>WINS</u>	<u>LOSSES</u>
I	I
	II
II	

POOL B

- (1) KC PREMIERE-SA
- (2) RAPTORS - MO
- (3) MO MAVERICKS

<u>WINS</u>	<u>LOSSES</u>
II	
	II
I	I

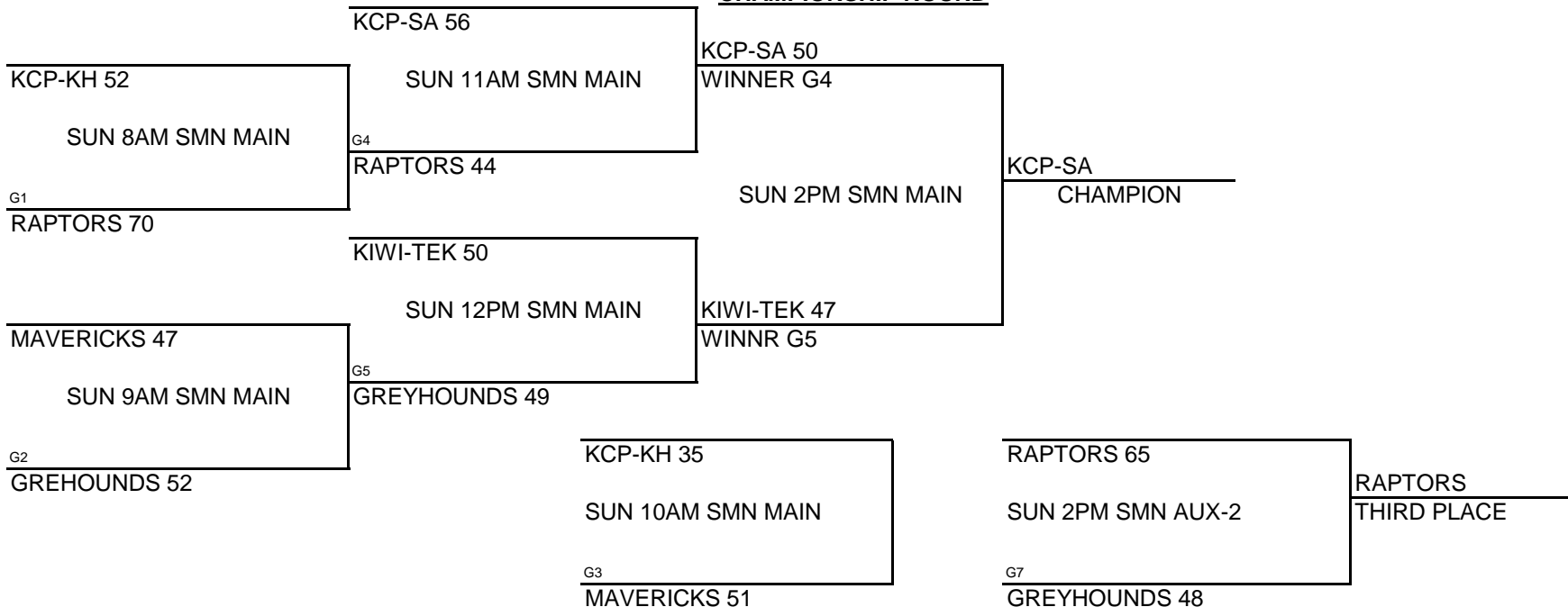
POOL PLAY ROUND 1

	<u>DAY</u>	<u>TIME</u>	<u>LOCATION</u>		<u>DAY</u>	<u>TIME</u>	<u>LOCATION</u>
A-1 VS A-2	FRI	8PM	SMN MAIN 43-39	B-1 VS B-2	FRI	9PM	SMN MAIN 56-47
A-1 VS A-3	SAT	3PM	SMN MAIN 21-73	B-1 VS B-3	SAT	3PM	SMN AUX-1 54-39
A-2 VS A-3	SAT	5PM	SMN MAIN 31-69	B-2 VS B-3	SAT	5PM	SMN AUX-1 48-59

SEEDING ROUND

KIWI-TEK 45	VS	KCP-SA 53	SAT	7PM	SMN MAIN	Winner gets 1st seed, Loser gets 2nd seed
KCP-KH 38	VS	MAVERICKS 45	SAT	7PM	SMN AUX-1	Winner gets 3rd seed, Loser gets 4th seed
GREYHOUNDS 40	VS	RAPTORS 44	SAT	7PM	SMN AUX-2	Winner gets 5th seed, Loser gets 6th seed

CHAMPIONSHIP ROUND



NOTE: TIE BREAKER

1 - HEAD TO HEAD

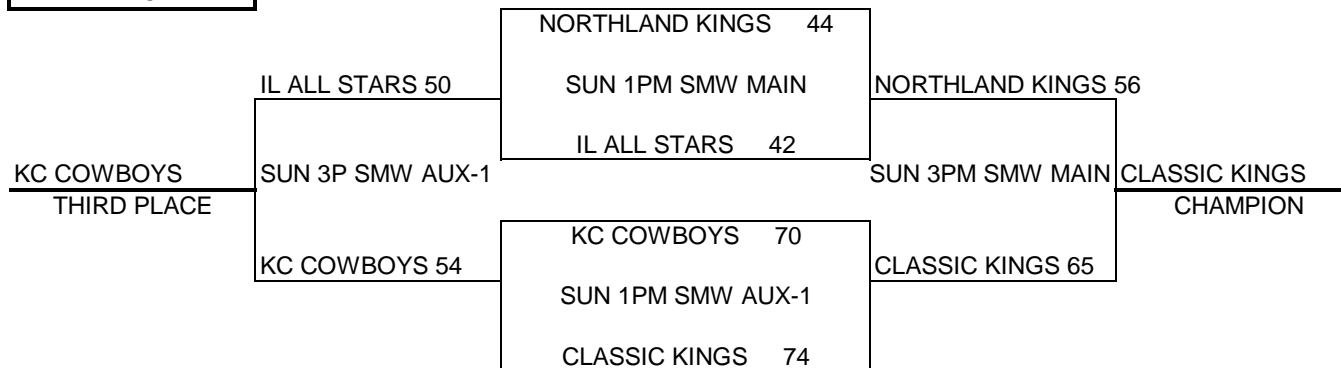
2 - POINT SPREAD (MAX. 15 POINTS)

3 - DEF. POINTS ALLOWED

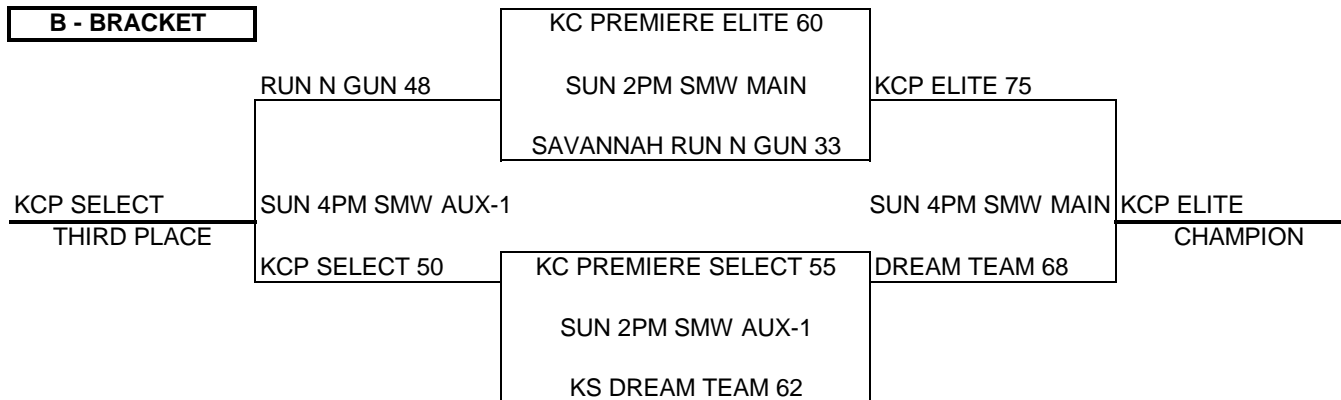
KC Premiere MAYB TOURNAMENT

11TH/12TH GRADE BOYS DIVISION

A - BRACKET



B - BRACKET



C - BRACKET

