

# KC PREMIERE MAYB TOURNAMENT

## 9TH/10TH GRADE BOYS DIVISION

### POOL A

- (1) KC PREMIERE 10
- (2) KC AND 1
- (3) KC ELITE

WINS	LOSSES
IIII	I
I	IIII
II	II

### POOL B

- (1) SOUTH KC SPARTANS
- (2) KC PREMIERE JV
- (3) MAVERICKS

WINS	LOSSES
IIII	
II	III
I	IIII

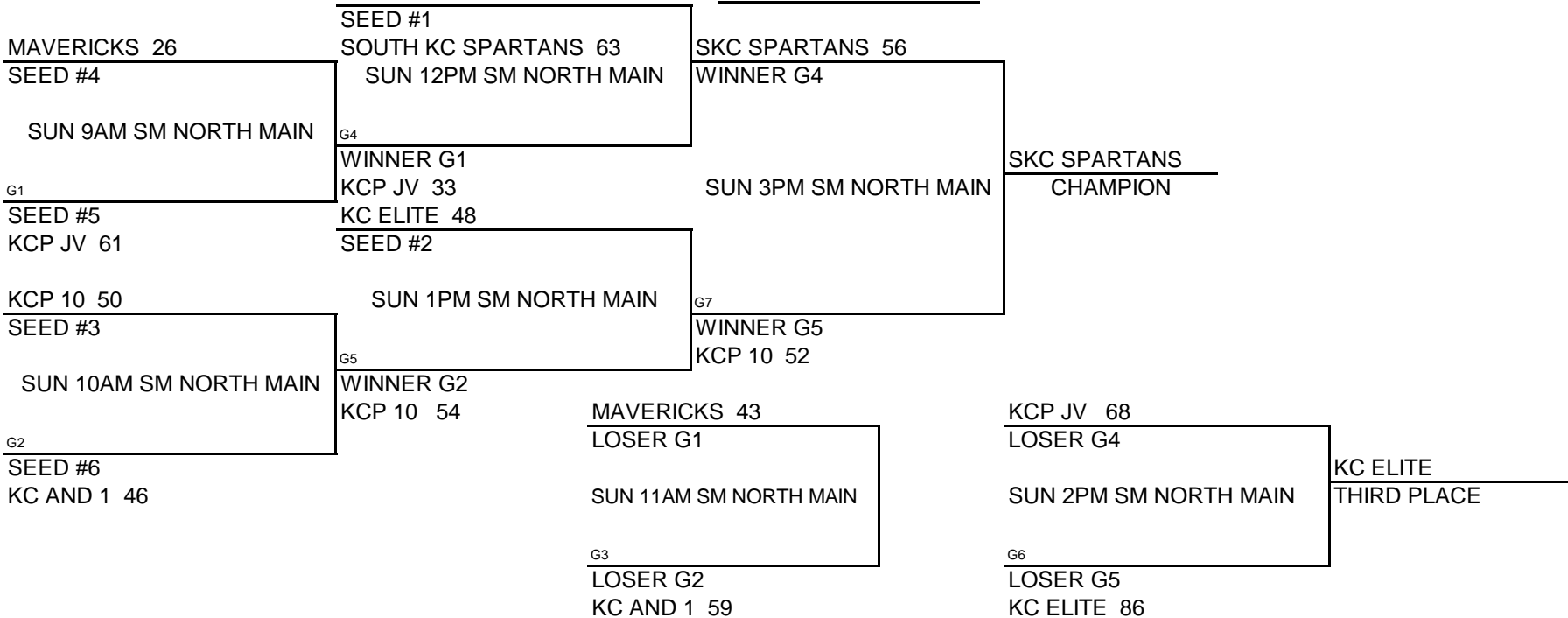
### POOL PLAY ROUND 1

A-1	VS	A-2	DAY	TIME	LOCATION	48-47	B-1	VS	B-2	DAY	TIME	LOCATION
A-1	VS	A-3	FRI	10:00 PM	SMN MAIN		B-1	VS	B-2	FRI	10:00 PM	SMN AUX-1 45-35
A-1	VS	A-3	SAT	4:00 PM	SMN MAIN	53-55	B-1	VS	B-3	SAT	4:00 PM	SMN AUX-2 56-38
A-2	VS	A-3	SAT	6:00 PM	SMN MAIN	35-64	B-2	VS	B-3	SAT	6:00 PM	SMN AUX-2 50-53

### SEEDING ROUND

SEED #1 POOL A	VS	SEED #1 POOL B	SAT	9PM SMN MAIN	Winner gets 1st seed, Loser gets 2nd seed	38-41
SEED #2 POOL A	VS	SEED #2 POOL B	SAT	8PM SMN MAIN	Winner gets 3rd seed, Loser gets 4th seed	80-53
SEED #3 POOL A	VS	SEED #3 POOL B	SAT	8PM SMN AUX-1	Winner gets 5th seed, Loser gets 6th seed	32-53

### CHAMPIONSHIP ROUND



NOTE: TIE BREAKER

1 - HEAD TO HEAD

2 - POINT SPREAD (MAX. 15 POINTS)

3 - DEF. POINTS ALLOWED

# KC PREMIERE MAYB TOURNAMENT

## 5TH/6TH GRADE GIRLS DIVISION

(1)	TEAM FOCUS
(2)	KC LIGHTNING
(3)	MO VALLEY MAGIC
(4)	THE HEAT-MO

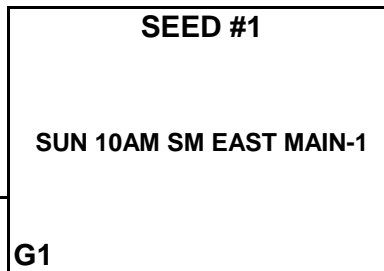
<u>WINS</u>	<u>LOSSES</u>
II	I
III	III
I	II

### SCHEDULE

1	VS	2	18-15	FRI	7:00 PM	WESTRIDGE
3	VS	4	45-12	SAT	10:00 AM	SM NORTHWEST AUX-1
1	VS	3	15-0	SAT	12:00 PM	SM NORTHWEST AUX-1
2	VS	4	11-14	SAT	12:00 PM	SM NORTHWEST AUX-2
1	VS	4	28-4	SAT	2:00 PM	SM NORTHWEST AUX-1
2	VS	3	5-54	SAT	2:00 PM	SM NORTHWEST AUX-2

### CHAMPIONSHIP ROUND

MO VALLEY MAGIC 43



LIGHTNING 6

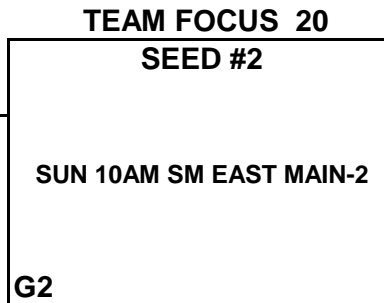
MO VALLEY MAGIC 35



SUN 12 PM SM EAST MAIN-1

HEAT  
THIRD PLACE

MO VALLEY MAGIC  
CHAMPION



G3  
HEAT 22

G4  
TEAM FOCUS 14

SEED #3  
THE HEAT 18

NOTE: TIE BREAKERS  
 1 - HEAD TO HEAD  
 2 - POINT SPREAD (MAX 15 POINTS)  
 3 - DEF. POINTS ALLOWED

# KC PREMIERE MAYB TOURNAMENT

## 5TH GRADE BOYS DIVISION

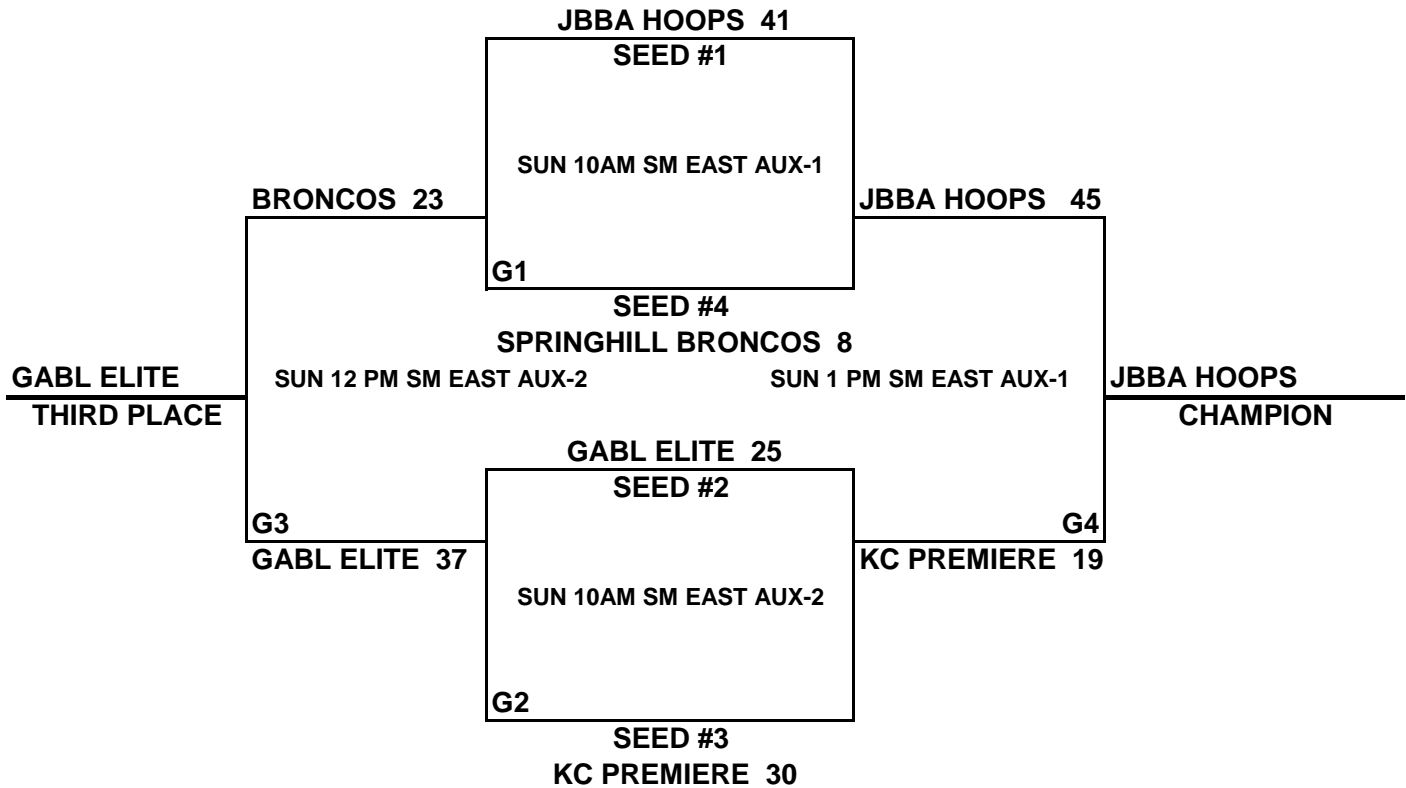
(1)	GABL ELITE
(2)	JBBA HOOPS
(3)	KC PREMIERE
(4)	SPRING HILL BRONCOS

<u>WINS</u>	<u>LOSSES</u>
II	I
III	
I	II
	III

### SCHEDULE

1	VS	2	26-33	FRI	8:00 PM	SM NORTH AUX-1
3	VS	4	34-16	FRI	8:00 PM	SM NORTH AUX-2
1	VS	3	27-15	SAT	4:00 PM	SM NORTHWEST AUX-1
2	VS	4	39-7	SAT	4:00 PM	SM NORTHWEST AUX-2
1	VS	4	36-12	SAT	6:00 PM	SM NORTHWEST AUX-1
2	VS	3	42-20	SAT	6:00 PM	SM NORTHWEST AUX-2

### CHAMPIONSHIP ROUND



**NOTE: TIE BREAKERS**

- 1 - HEAD TO HEAD
- 2 - POINT SPREAD (MAX 15 POINTS)
- 3 - DEF. POINTS ALLOWED

# KC PREMIERE MAYB TOURNAMENT

## 6TH/7TH GRADE GIRLS DIVISION

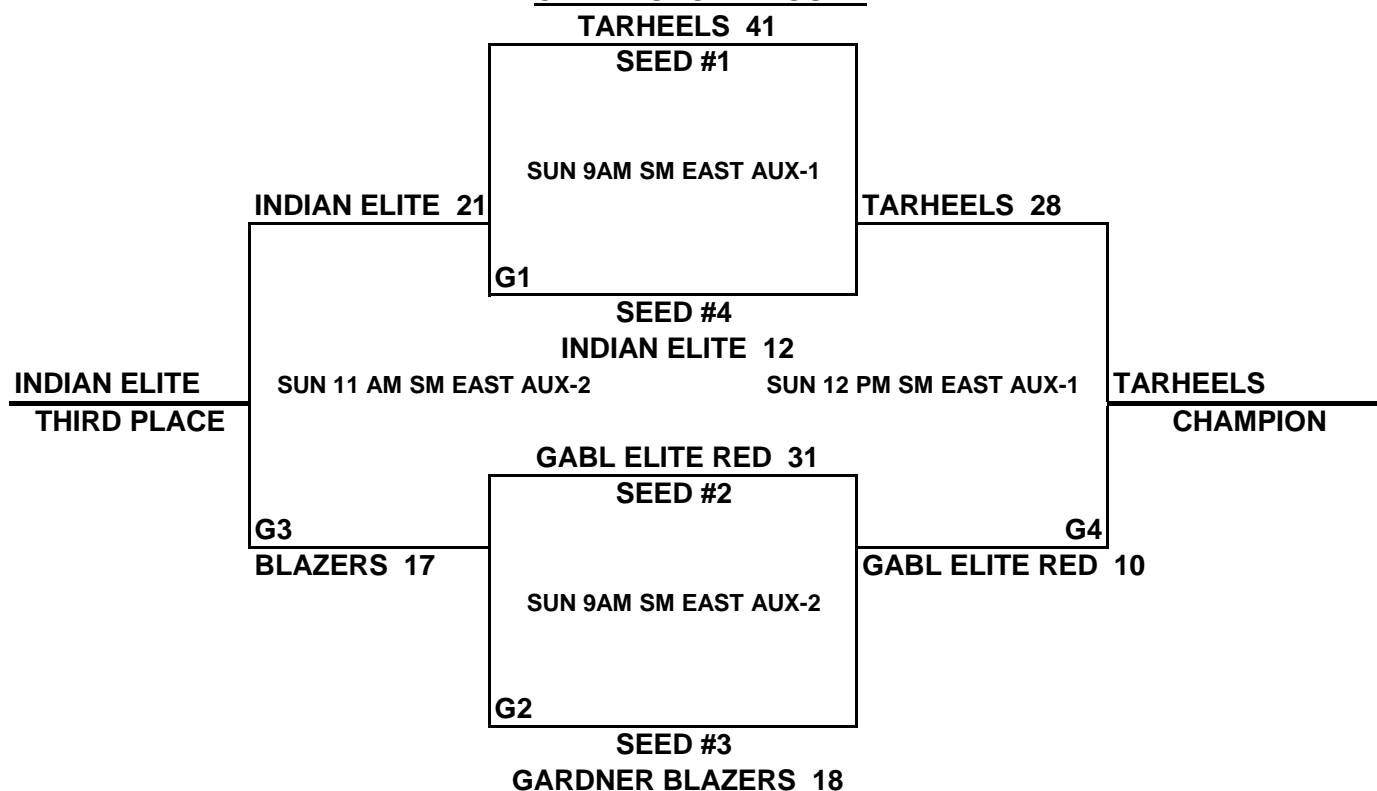
(1)	GARDNER BLAZERS
(2)	GABL ELITE RED
(3)	INDIAN ELITE
(4)	ST. JOE TARHEELS

<u>WINS</u>	<u>LOSSES</u>
I	II
II	I
	III
III	

### SCHEDULE

1	VS	2	19-33	FRI	6:00 PM	WESTRIDGE
3	VS	4	8-26	SAT	10:00 AM	SM NORTHWEST AUX-2
1	VS	3	15-0	SAT	3:00 PM	SM NORTHWEST AUX-1
2	VS	4	19-24	SAT	3:00 PM	SM NORTHWEST AUX-2
1	VS	4	14-48	SAT	5:00 PM	SM NORTHWEST AUX-1
2	VS	3	21-20	SAT	5:00 PM	SM NORTHWEST AUX-2

### CHAMPIONSHIP ROUND



**NOTE: TIE BREAKERS**

- 1 - HEAD TO HEAD
- 2 - POINT SPREAD (MAX 15 POINTS)
- 3 - DEF. POINTS ALLOWED

# KC PREMIERE MAYB TOURNAMENT

## 6TH GRADE BOYS DIVISION

### POOL A

- (1) SWOOSH-ELLER
- (2) GABL ELITE
- (3) ALODIA ECLIPSE 2017-KC

<u>WINS</u>	<u>LOSSES</u>
III	I
I	II
II	II

### POOL B

- (1) ALODIA ECLIPSE 2016-KC
- (2) JBBA HOOPS
- (3) SPRING HILL MAVERICKS

<u>WINS</u>	<u>LOSSES</u>
III	I
II	II
I	II

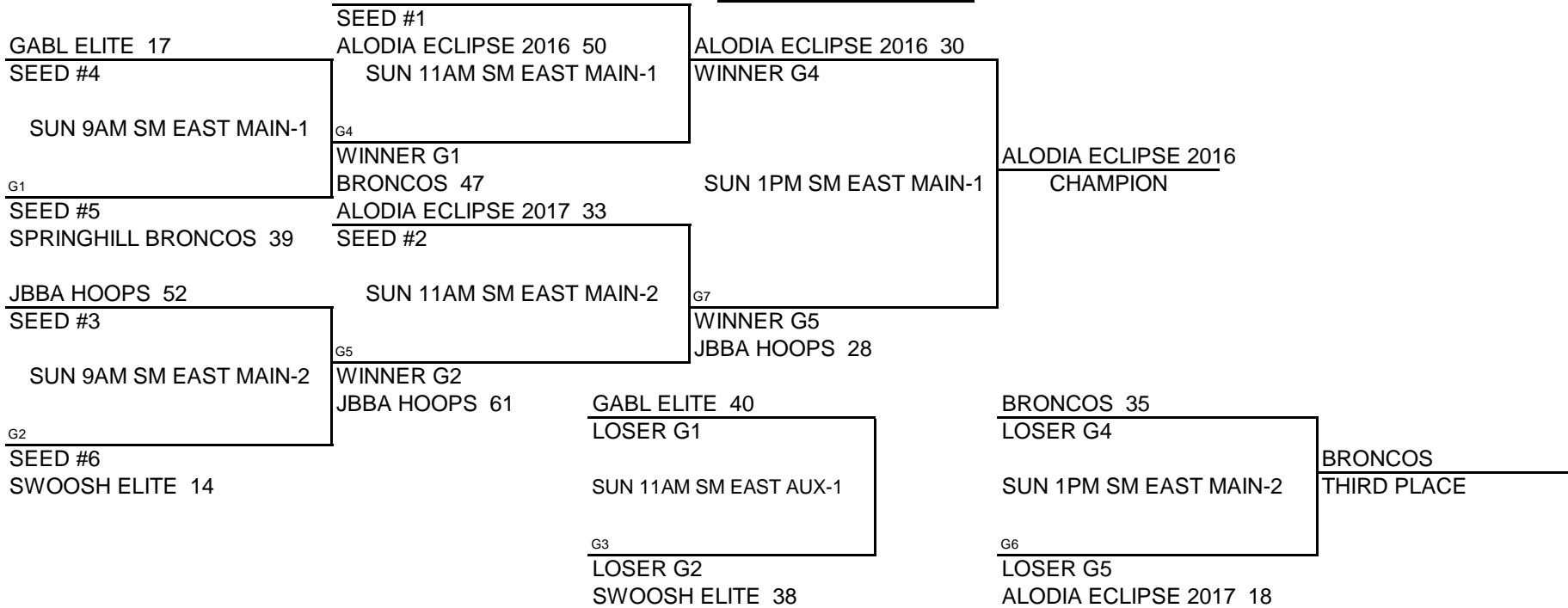
### POOL PLAY ROUND 1

	<u>DAY</u>	<u>TIME</u>	<u>LOCATION</u>		<u>DAY</u>	<u>TIME</u>	<u>LOCATION</u>
A-1 VS A-2	FRI	8:00 PM	WESTRIDGE	16-21	B-1 VS B-2	FRI	9:00 PM WESTRIDGE 39-33
A-1 VS A-3	SAT	9:00 AM	SMNW AUX-1	24-39	B-1 VS B-3	SAT	9:00 AM SMNW AUX-2 31-47
A-2 VS A-3	SAT	11:00 AM	SMNW AUX-1	14-30	B-2 VS B-3	SAT	11:00 AM SMNW AUX-2 47-37

### SEEDING ROUND

SEED #1 POOL A VS	SEED #1 POOL B	SAT	7PM	SMNW AUX-1	Winner gets 1st seed, Loser gets 2nd seed	32-63
SEED #2 POOL A VS	SEED #2 POOL B	SAT	1PM	SMNW AUX-1	Winner gets 3rd seed, Loser gets 4th seed	10-26
SEED #3 POOL A VS	SEED #3 POOL B	SAT	1PM	SMNW AUX-2	Winner gets 5th seed, Loser gets 6th seed	24-53

### CHAMPIONSHIP ROUND



NOTE: TIE BREAKER

1 - HEAD TO HEAD

2 - POINT SPREAD (MAX. 15 POINTS)

3 - DEF. POINTS ALLOWED

# KC PREMIERE MAYB TOURNAMENT

## 7TH GRADE BOYS DIVISION

### POOL A

(1) GABL ELITE-BLUE  
 (2) KC PREMIERE  
 (3) BLAZERS

WINS	LOSSES
II	III
	IIII
II	II

### POOL B

(1) GABL ELITE-RED  
 (2) PUMAS  
 (3) KANSAS CAGERS

WINS	LOSSES
III	I
IIII	I
III	II

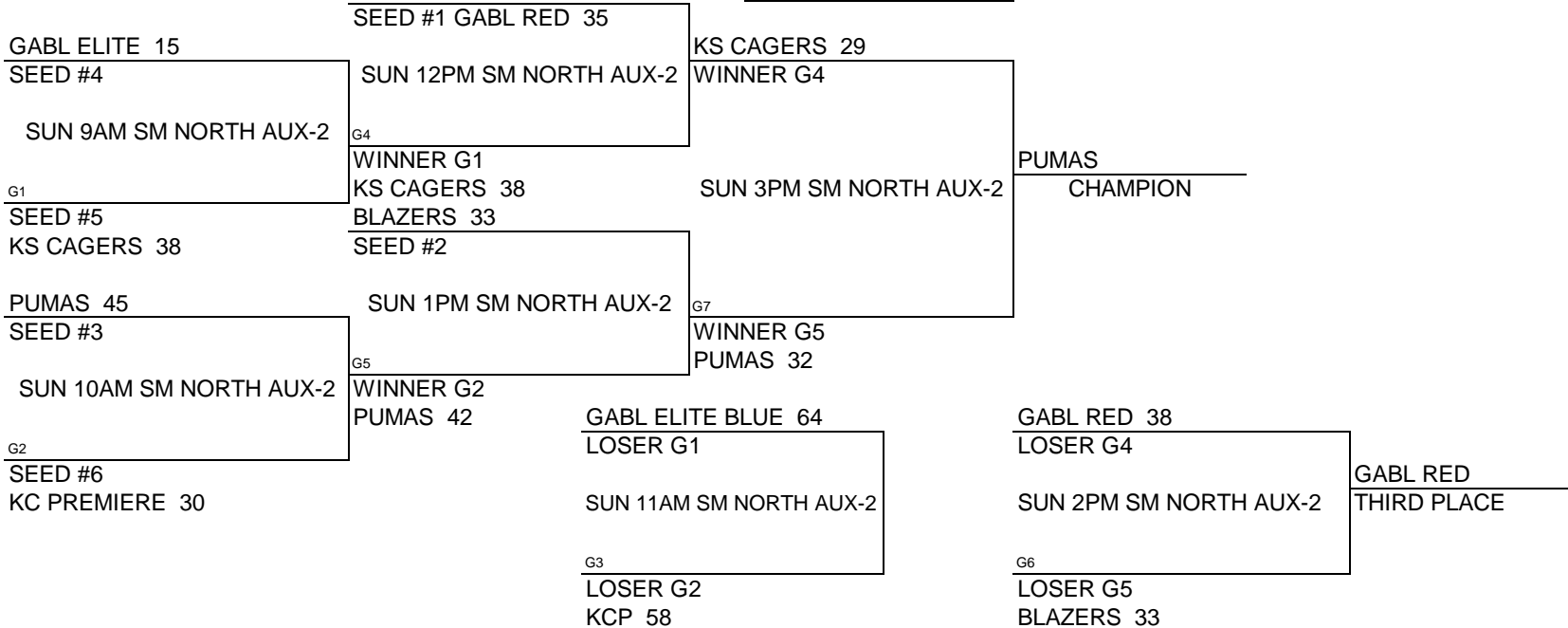
### POOL PLAY ROUND 1

A-1	VS	A-2	DAY	TIME	LOCATION	49-37	B-1	VS	B-2	DAY	TIME	LOCATION	51-38
A-1	VS	A-3	FRI	9:00 PM	SMN AUX-1	49-37	B-1	VS	B-2	FRI	9:00 PM	SMN AUX-2	51-38
A-1	VS	A-3	SAT	3:00 PM	SMN AUX-1	37-45	B-1	VS	B-3	SAT	3:00 PM	SMN AUX-2	28-27
A-2	VS	A-3	SAT	5:00 PM	SMN AUX-1	34-51	B-2	VS	B-3	SAT	5:00 PM	SMN AUX-2	41-39

### SEEDING ROUND

SEED #1 POOL A	VS	SEED #1 POOL B	SAT	9PM	SMN AUX-2	Winner gets 1st seed, Loser gets 2nd seed	25-56
SEED #2 POOL A	VS	SEED #2 POOL B	SAT	7PM	SMN AUX-1	Winner gets 3rd seed, Loser gets 4th seed	29-60
SEED #3 POOL A	VS	SEED #3 POOL B	SAT	7PM	SMN AUX-2	Winner gets 5th seed, Loser gets 6th seed	32-53

### CHAMPIONSHIP ROUND



NOTE: TIE BREAKER

1 - HEAD TO HEAD

2 - POINT SPREAD (MAX. 15 POINTS)

3 - DEF. POINTS ALLOWED

# KC PREMIERE MAYB TOURNAMENT

## 8TH GRADE BOYS DIVISION

### POOL A

(1)	OLATHE HAWKS
(2)	SOUTH KC SPARTANS
(3)	PUMAS

### WINS    LOSSES

III	I
II	I
IIII	I

### POOL B

(1)	ALODIA ECLIPSE
(2)	KC PREMIERE RED
(3)	KC AND 1

### WINS    LOSSES

II	III
I	IIII
I	IIII

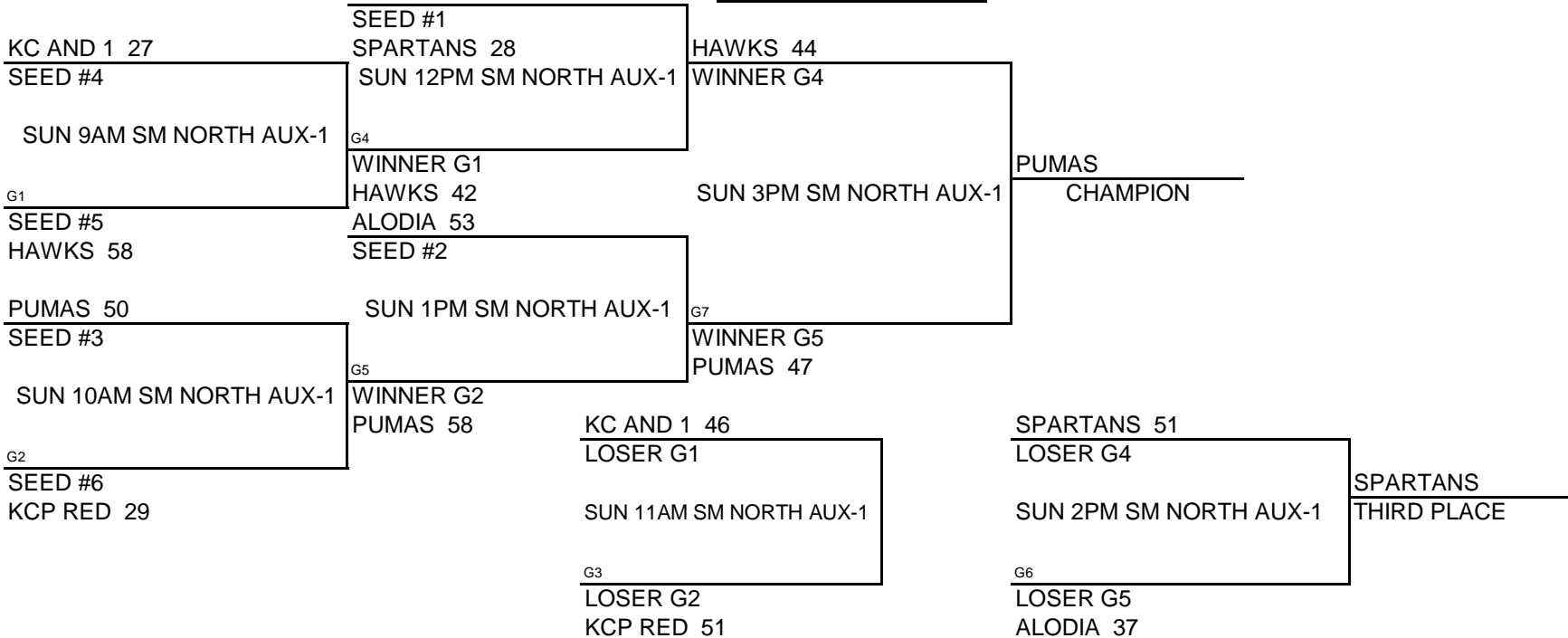
### POOL PLAY ROUND 1

		<u>DAY</u>		<u>TIME</u>		<u>LOCATION</u>				<u>DAY</u>		<u>TIME</u>		<u>LOCATION</u>	
A-1	VS	A-2	FRI	8:00 PM	SMN MAIN	33-46	B-1	VS	B-2	FRI	9:00 PM	SMN MAIN	44-42		
A-1	VS	A-3	SAT	3:00 PM	SMN MAIN	54-46	B-1	VS	B-3	SAT	4:00 PM	SMN AUX-1	41-38		
A-2	VS	A-3	SAT	5:00 PM	SMN MAIN	42-51	B-2	VS	B-3	SAT	6:00 PM	SMN AUX-1	39-40		

### SEEDING ROUND

SEED #1 POOL A	VS	SEED #1 POOL B	SAT	9PM	SMN AUX-1	Winner gets 1st seed, Loser gets 2nd seed	40-29
SEED #2 POOL A	VS	SEED #2 POOL B	SAT	7PM	SMN MAIN	Winner gets 3rd seed, Loser gets 4th seed	69-39
SEED #3 POOL A	VS	SEED #3 POOL B	SAT	8PM	SMN AUX-2	Winner gets 5th seed, Loser gets 6th seed	45-14

### CHAMPIONSHIP ROUND



NOTE: TIE BREAKER

1 - HEAD TO HEAD

2 - POINT SPREAD (MAX. 15 POINTS)

3 - DEF. POINTS ALLOWED