

KC PREMIERE MAYB TOURNAMENT

11TH/12TH GRADE BOYS DIVISION

POOL A

WINS

LOSSES

(1)	COLLEGE PROSPECTS/SLEEPER		III
(2)	OUTLAWS	I	II
(3)	LEE'S SUMMIT BOMB SQUAD	II	I
(4)	NE BUFFALO SOLDIERS	III	

POOL B

WINS

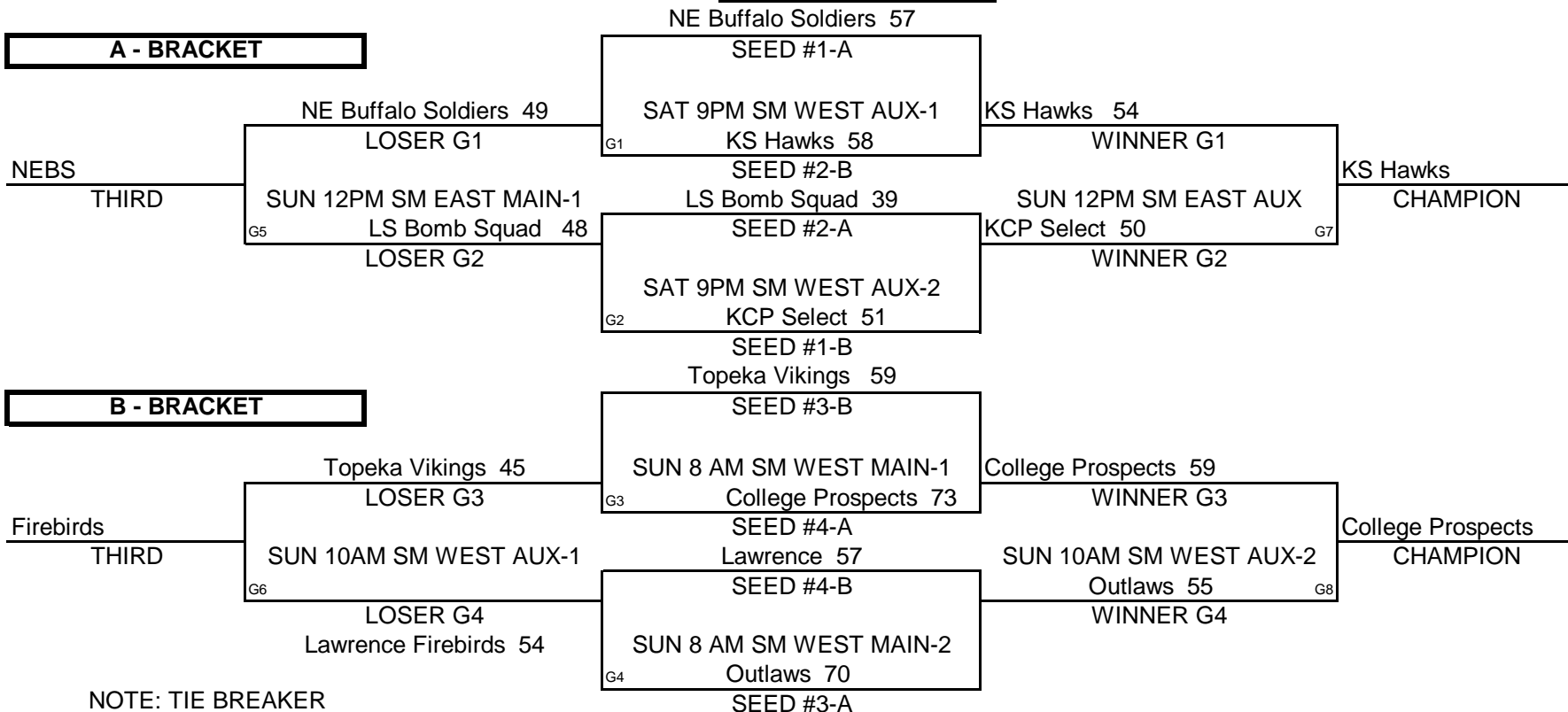
LOSSES

(1)	LAWRENCE FIREBIRDS		III
(2)	KC HAWKS	II	I
(3)	KC PREMIERE SELECT	III	
(4)	TOPEKA VIKINGS	I	II

POOL PLAY ROUND

A-1	VS	A-2	FRI	8PM	SMNW MAIN-2 55-65	B-1	VS	B-2	SAT	3PM	SM EAST AUX 51-54
A-3	VS	A-4	FRI	9PM	SMNW MAIN-2 34-36	B-3	VS	B-4	SAT	3PM	SM EAST MAIN 67-66
A-2	VS	A-3	SAT	5PM	SM WEST AUX-2 45-66	B-2	VS	B-3	SAT	5PM	SM EAST AUX 38-43
A-1	VS	A-4	SAT	5PM	SM WEST AUX-1 27-43	B-1	VS	B-4	SAT	5PM	SM EAST MAIN 54-65
A-1	VS	A-3	SAT	7PM	SM WEST AUX-2 45-52	B-1	VS	B-3	SAT	7PM	SM EAST AUX 51-65
A-2	VS	A-4	SAT	7PM	SM WEST AUX-1 42-54	B-2	VS	B-4	SAT	7PM	SM EAST MAIN 67-49

CHAMPIONSHIP ROUND



NOTE: TIE BREAKER

1 - HEAD TO HEAD

2 - POINT SPREAD (MAX. 15 POINTS)

3 - DEF. POINTS ALLOWED

KC PREMIERE MAYB TOURNAMENT

5TH/6TH GRADE GIRLS DIVISION

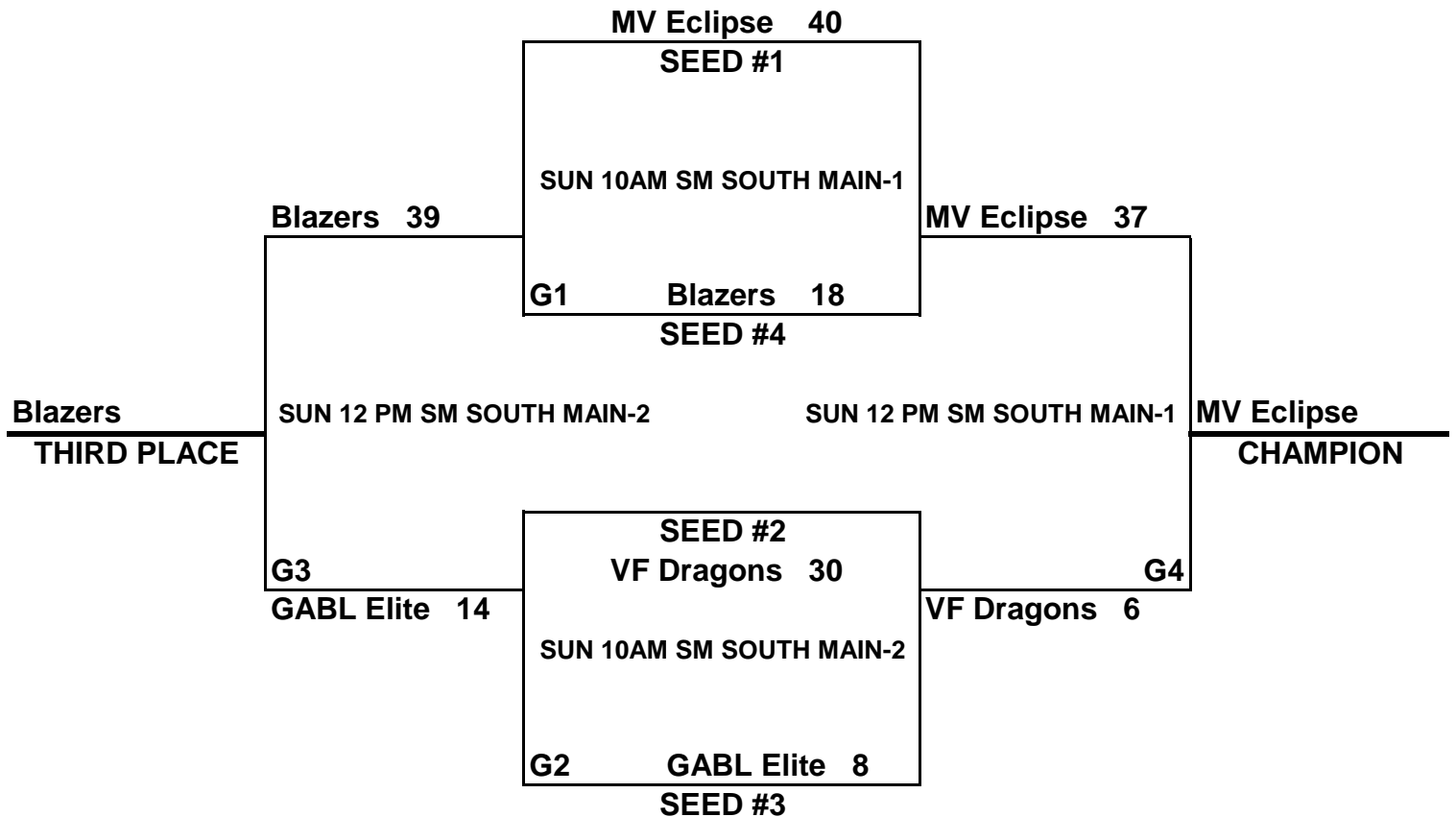
(1)	MV ECLIPSE
(2)	GABL ELITE
(3)	VF DRAGONS
(4)	BLAZERS

WINS	LOSSES
IIII	
I	III
III	II
I	IIII

SCHEDULE

1	VS	2	50-13	FRI	6:30 PM	HORIZONS
3	VS	4	20-19	SAT	3:00 PM	SM EAST MAIN-2
1	VS	3	28-20	SAT	5:00 PM	SM EAST MAIN-2
2	VS	4	20-17	SAT	6:00 PM	SM EAST MAIN-2
1	VS	4	60-13	SAT	8:00 PM	SM EAST MAIN-1
2	VS	3	14-42	SAT	8:00 PM	SM EAST MAIN-2

CHAMPIONSHIP ROUND



NOTE: TIE BREAKERS

1 - HEAD TO HEAD

2 - POINT SPREAD (MAX 15 POINTS)

3 - DEF. POINTS ALLOWED

KC PREMIERE MAYB TOURNAMENT

6TH/7TH GRADE GIRLS DIVISION

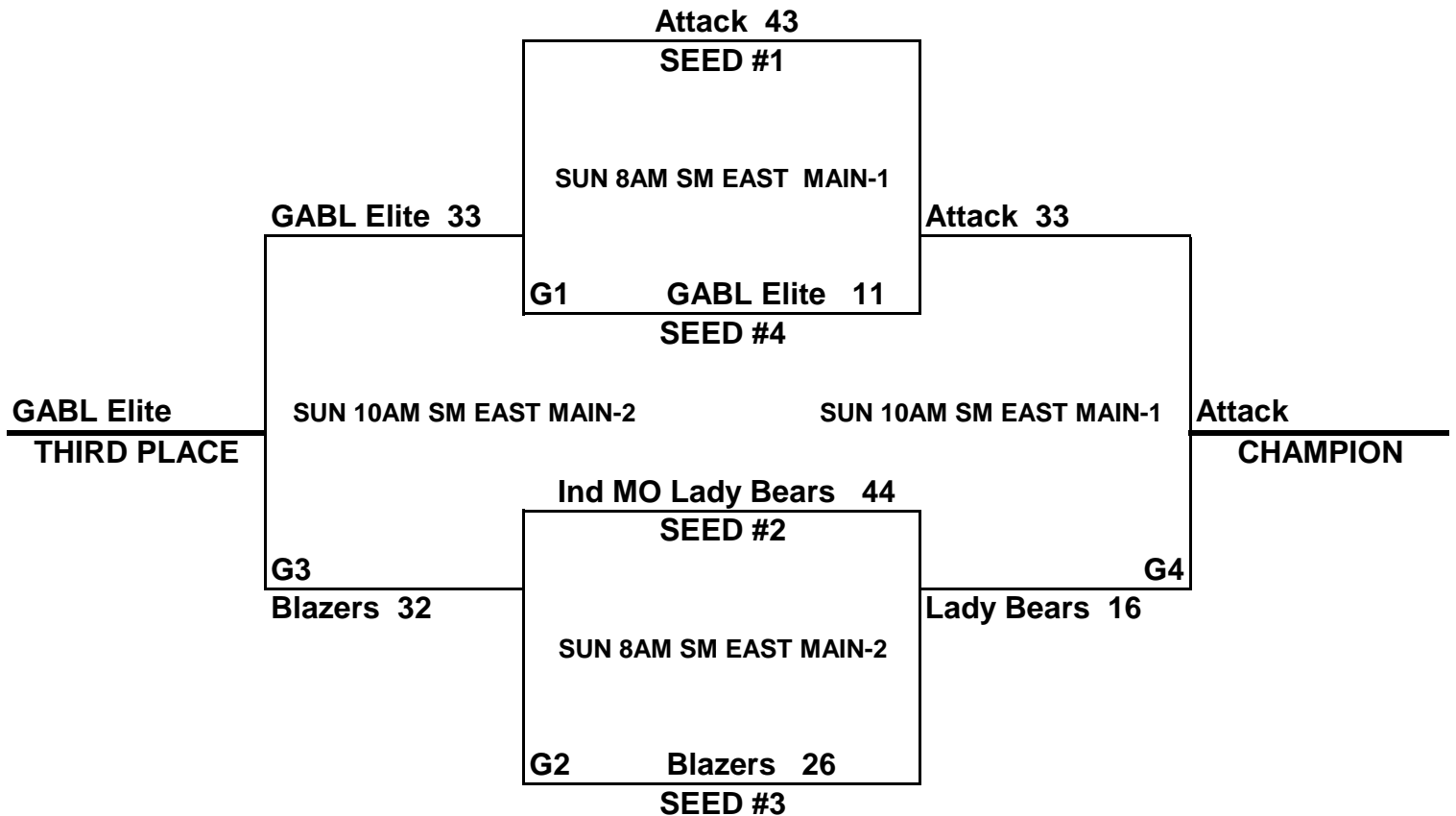
(1)	GARDNER BLAZERS
(2)	GABL ELITE BLUE
(3)	INDEPENDENCE MO LADY BEARS
(4)	ATTACK

WINS	LOSSES
I	IIII
I	IIII
III	II
IIII	

SCHEDULE

1	VS	2	30-12	FRI	7:30 PM	HORIZONS
3	VS	4	12-27	FRI	8:30 PM	HORIZONS
1	VS	3	12-28	SAT	4:00 PM	SM EAST AUX
2	VS	4	10-51	SAT	4:00 PM	SM EAST MAIN-1
1	VS	4	6-57	SAT	7:00 PM	SM EAST MAIN-2
2	VS	3	4-34	SAT	8:00 PM	SM EAST AUX

CHAMPIONSHIP ROUND



NOTE: TIE BREAKERS

1 - HEAD TO HEAD

2 - POINT SPREAD (MAX 15 POINTS)

3 - DEF. POINTS ALLOWED

KC PREMIERE MAYB TOURNAMENT

6TH GRADE BOYS DIVISION

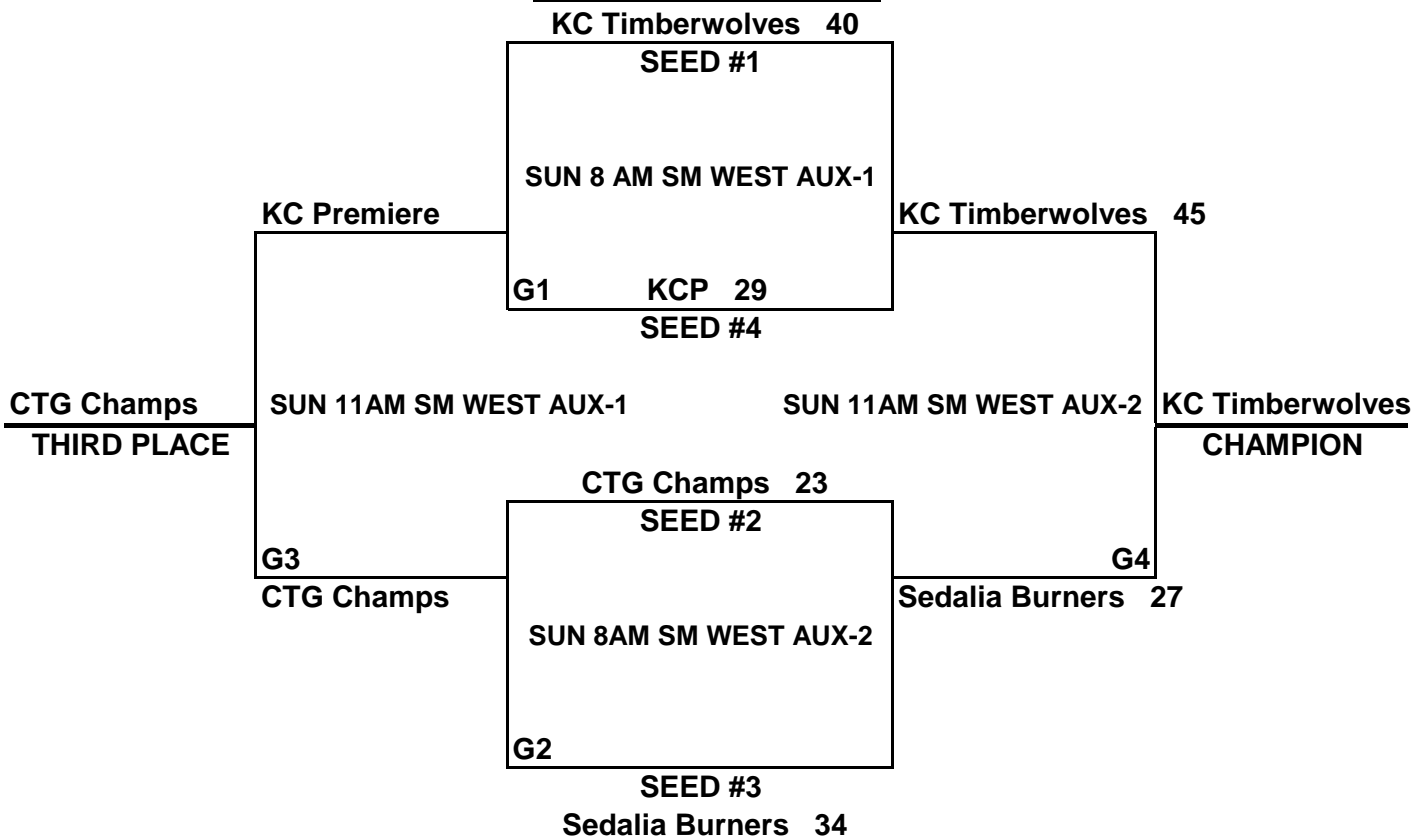
(1)	KC TIMBERWOLVES
(2)	KC PREMIERE
(3)	CTG CHAMPS
(4)	SEDALIA BURNERS

<u>WINS</u>	<u>LOSSES</u>
III	
	III
II	I
I	II

SCHEDULE

1	VS	2	54-25	FRI	5:30 PM	HORIZONS
1	VS	3	49-33	SAT	1:00 PM	SM WEST MAIN-1
2	VS	4	34-61	SAT	1:00 PM	SM WEST MAIN-2
1	VS	4	54-53	SAT	3:00 PM	SM WEST MAIN-1
2	VS	3	37-41	SAT	3:00 PM	SM WEST MAIN-2
3	VS	4	51-42	SAT	7:00 PM	SM WEST MAIN-2

CHAMPIONSHIP ROUND



NOTE: TIE BREAKERS

- 1 - HEAD TO HEAD
- 2 - POINT SPREAD (MAX 15 POINTS)
- 3 - DEF. POINTS ALLOWED

KC PREMIERE MAYB TOURNAMENT

7TH GRADE BOYS DIVISION

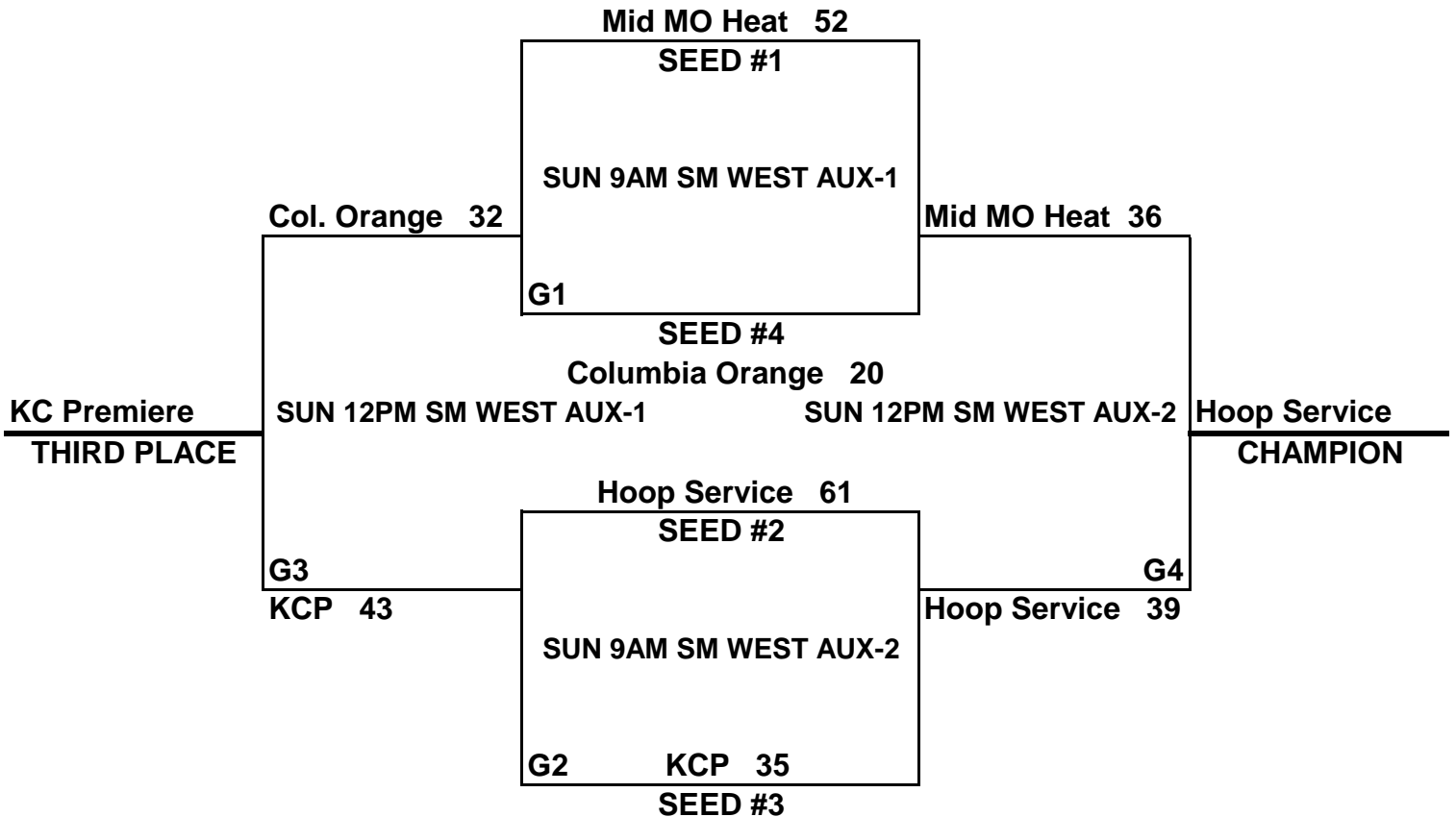
(1)	HOOP SERVICE
(2)	KC PREMIERE
(3)	MID-MO HEAT
(4)	COLUMBIA ORANGE

<u>WINS</u>	<u>LOSSES</u>
II	I
I	II
III	
	III

SCHEDULE

1	VS	2	60-28	FRI	7:00 PM	SMNW MAIN-1
1	VS	3	41-43	SAT	12:00 PM	SM WEST AUX-1
2	VS	4	45-32	SAT	1:00 PM	SM WEST AUX-2
3	VS	4	70-17	SAT	7:00 PM	SM WEST MAIN-1
1	VS	4	84-23	SAT	9:00 PM	SM WEST MAIN-1
2	VS	3	41-71	SAT	9:00 PM	SM WEST MAIN-2

CHAMPIONSHIP ROUND



NOTE: TIE BREAKERS

1 - HEAD TO HEAD

2 - POINT SPREAD (MAX 15 POINTS)

3 - DEF. POINTS ALLOWED

KC PREMIERE MAYB TOURNAMENT

8TH GRADE GIRLS DIVISION

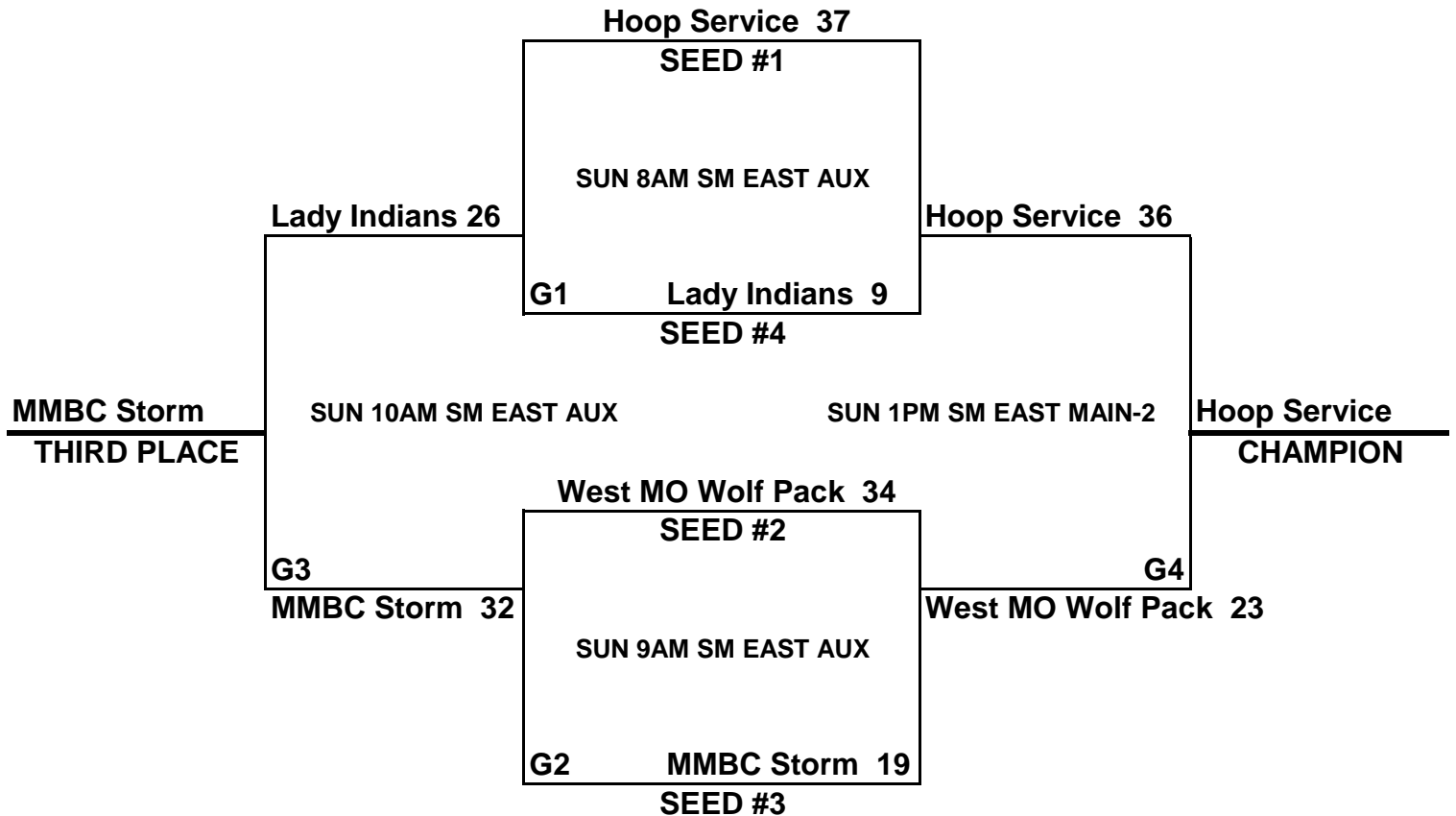
(1)	HOOP SERVICE
(2)	MV BLAZERS
(3)	WEST MO WOLF PACK
(4)	MMBC STORM

<u>WINS</u>	<u>LOSSES</u>
IIII	
	IIII
III	II
II	III

SCHEDULE

1	VS	2	15-0	FRI	9:30 PM	HORIZONS
3	VS	4	29-22	SAT	4:00 PM	SM EAST MAIN-2
1	VS	3	38-17	SAT	6:00 PM	SM EAST AUX
2	VS	4	25-30	SAT	6:00 PM	SM EAST MAIN-1
1	VS	4	35-23	SAT	9:00 PM	SM EAST AUX
2	VS	3	9-40	SAT	9:00 PM	SM EAST MAIN-1

CHAMPIONSHIP ROUND



NOTE: TIE BREAKERS

1 - HEAD TO HEAD

2 - POINT SPREAD (MAX 15 POINTS)

3 - DEF. POINTS ALLOWED

KC PREMIERE MAYB TOURNAMENT

8TH GRADE BOYS DIVISION

POOL A

- (1) KC PREMIERE BLACK
- (2) LEGENDS
- (3) KS HAWKS

WINS	LOSSES
I	I
II	
	II

POOL B

- (1) KC PREMIERE RED
- (2) NE BUFFALO SOLDIERS
- (3) MO FLIGHT

WINS	LOSSES
	II
I	I
II	

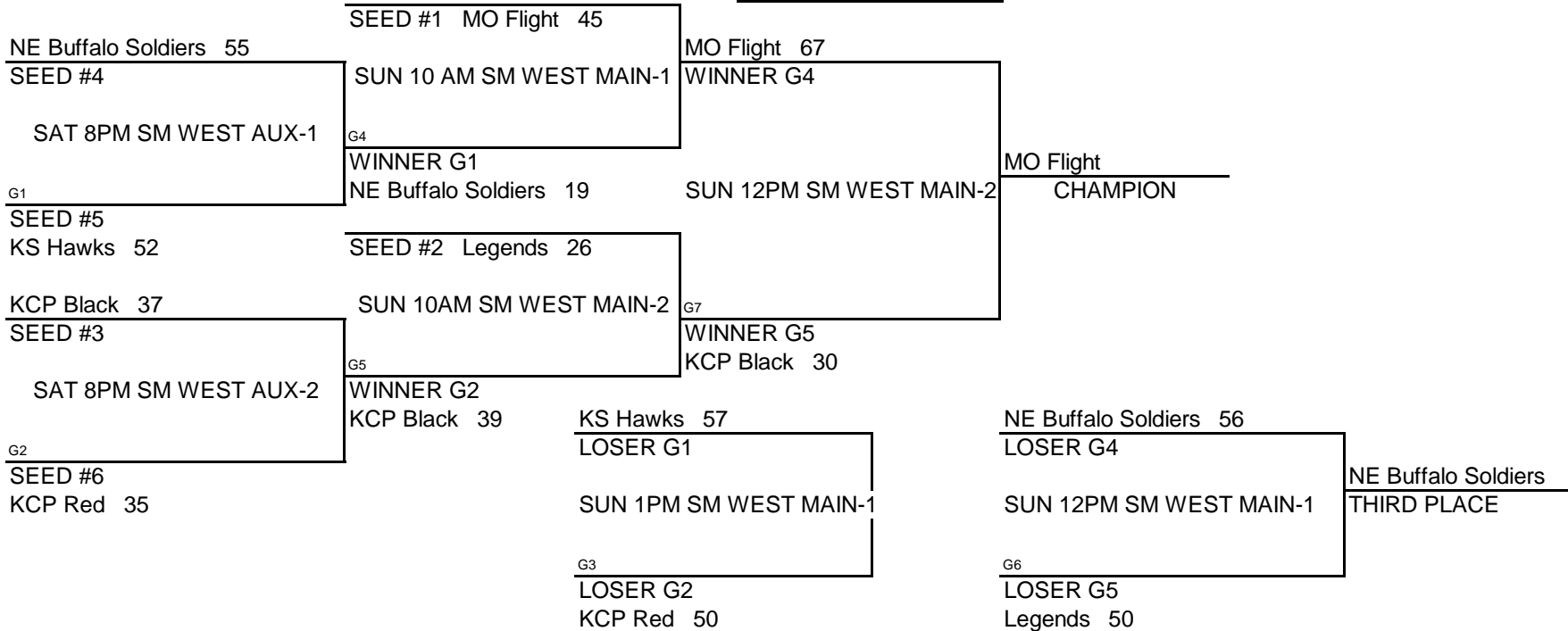
POOL PLAY ROUND 1

				DAY	TIME	LOCATION					DAY	TIME	LOCATION	
A-1	VS	A-2	FRI	7:00 PM	SMNW MAIN-2	28-41	B-1	VS	B-2	SAT	12:00 PM	SM WEST AUX-2	43-48	
A-1	VS	A-3	SAT	2:00 PM	SM WEST AUX-1	46-31	B-1	VS	B-3	SAT	2:00 PM	SM WEST AUX-2	34-76	
A-2	VS	A-3	SAT	4:00 PM	SM WEST AUX-1	44-33	B-2	VS	B-3	SAT	4:00 PM	SM WEST AUX-2	35-54	

SEEDING ROUND

SEED #1 POOL A	VS	SEED #1 POOL B	SAT	6PM	SM WEST AUX-2	Winner gets 1st seed, Loser gets 2nd seed	56-52
SEED #2 POOL A	VS	SEED #2 POOL B	SAT	6PM	SM WEST AUX-1	Winner gets 3rd seed, Loser gets 4th seed	37-35
SEED #3 POOL A	VS	SEED #3 POOL B	SAT	6PM	SM WEST MAIN-2	Winner gets 5th seed, Loser gets 6th seed	55-52

CHAMPIONSHIP ROUND



NOTE: TIE BREAKER

1 - HEAD TO HEAD

2 - POINT SPREAD (MAX. 15 POINTS)

3 - DEF. POINTS ALLOWED

KC PREMIERE MAYB TOURNAMENT

9TH/10TH GRADE BOYS DIVISION

POOL A

- (1) KC PREMIERE 10TH
- (2) OLATHE BULLDOGS
- (3) CTG WARRIORS

WINS	LOSSES
II	
I	I
	II

POOL B

- (1) KC PREMIERE JV
- (2) KC PREMIERE 9TH
- (3) BW BLUEJAYS

WINS	LOSSES
I	
I	
	II

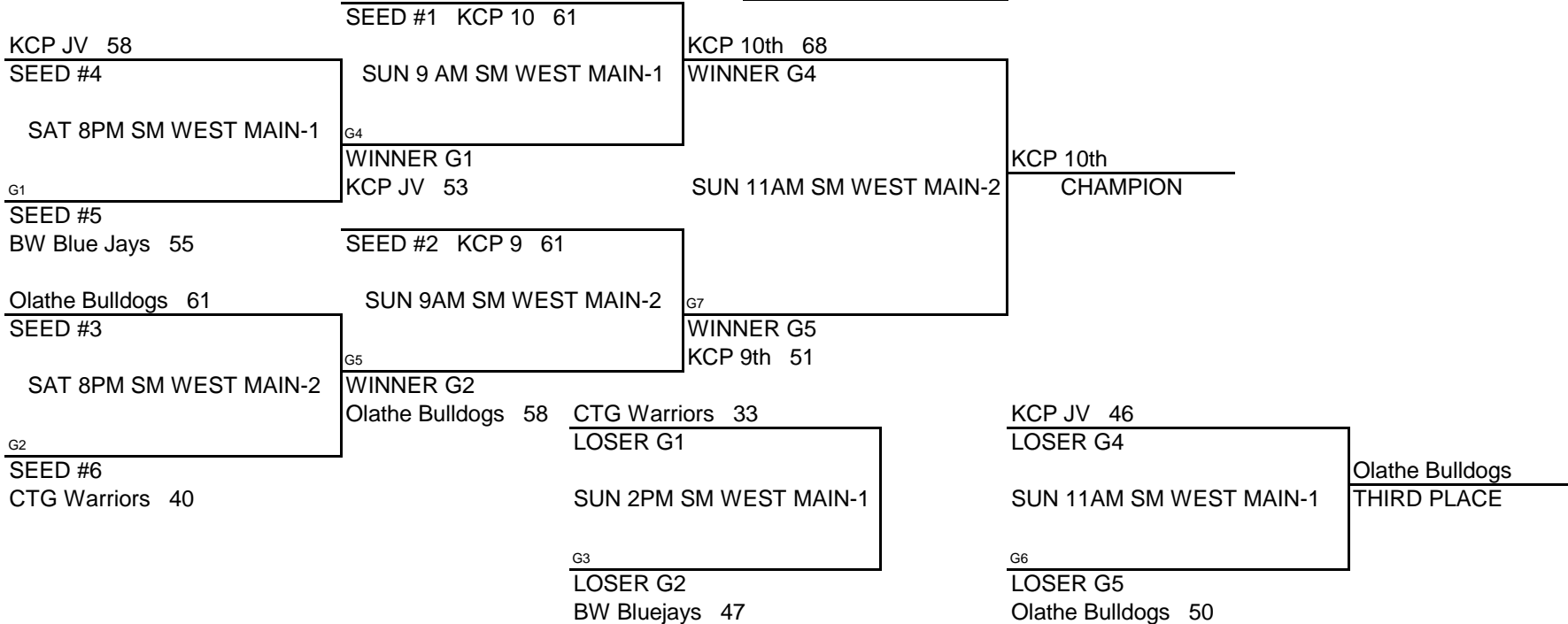
POOL PLAY ROUND 1

			<u>DAY</u>	<u>TIME</u>	<u>LOCATION</u>				<u>DAY</u>	<u>TIME</u>	<u>LOCATION</u>
A-1	VS	A-2	FRI	8:00 PM	SMNW MAIN-1	54-41	B-1	VS	B-2	WED	8:00 PM SM WEST AUX-1
A-1	VS	A-3	SAT	1:00 PM	SM WEST AUX-1	72-41	B-1	VS	B-3	FRI	9:00 PM SMNW MAIN-1 41-34
A-2	VS	A-3	SAT	3:00 PM	SM WEST AUX-1	61-21	B-2	VS	B-3	SAT	3:00 PM SM WEST AUX-2 58-37

SEEDING ROUND

SEED #1 POOL A	VS	SEED #1 POOL B	SAT	6:00 PM SM WEST MAIN-1	Winner gets 1st seed, Loser gets 2nd seed	56-38
SEED #2 POOL A	VS	SEED #2 POOL B	SAT	5:00 PM SM WEST MAIN-1	Winner gets 3rd seed, Loser gets 4th seed	72-41
SEED #3 POOL A	VS	SEED #3 POOL B	SAT	5:00 PM SM WEST MAIN-2	Winner gets 5th seed, Loser gets 6th seed	49-58

CHAMPIONSHIP ROUND



NOTE: TIE BREAKER
 1 - HEAD TO HEAD
 2 - POINT SPREAD (MAX. 15 POINTS)
 3 - DEF. POINTS ALLOWED