

11th Annual Kingman Winter MAYB Tournament

6 Girls Division

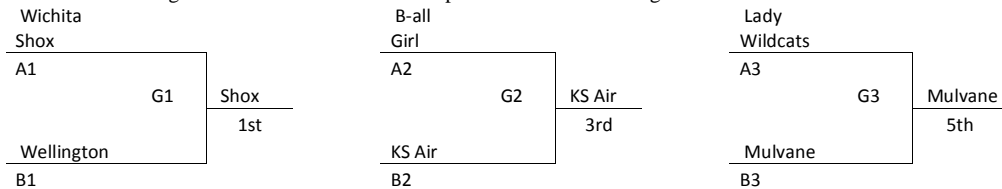
Records in pool play will determine seeding in tournament. In case of tie in pool play, point system will determine seeding. See point system explanation below. Games played at Kingman Middle School (KMS), 607 North Spruce Street, and Kingman High School (Old) and (New), 260 West Kansas Avenue.

- | | | |
|------------------|--|----------------------|
| <u>Pool A</u> | | <u>Pool B</u> |
| 1) Wichita Shox | | 4) Wellington Storm |
| 2) B-all-Girl | | 5) Mulvane Lady Cats |
| 3) Lady Wildcats | | 6) Kansas Air |

Saturday, February 5

	OLD	NEW	KMS
8 a.m.			
9			
10			
11			
12 p.m.	1-2	4-5	
1			
2			
3	4-6	2-3	
4			
5		5-6	
6	1-3		
7			
8			G3
9			G2
10			G1

POINT SYSTEM: Winning team can earn up to 15 points for win. Any win OVER 15 points will count +15 for winner. Points from ALL games count for final point total. If tie still exists, coin flip will be used. Teams involved in flip each flip coin with odd person out determined winner. Remaining two teams use head/head competition to determine higher seed.



11th Annual Kingman Winter MAYB Tournament

3 Boys Division

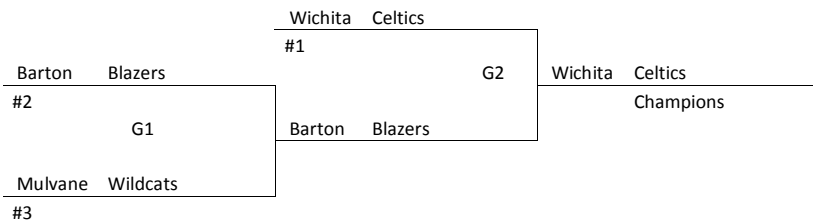
Records in pool play will determine seeding in tournament. In case of tie in pool play, point system will determine seeding. See point system explanation below.

- 1) Mulvane Wildcats
- 2) Wichita Celtics
- 3) Barton Blazers

All games played at Kingman Middle School, 607 North Spruce Street.

Saturday, February 5

8 a.m.	1-2
9	
10	1-3
11	
12 p.m.	2-3
1	
2	G1
3	
4	G2



Any win OVER 15 points will count +15 for winner. Points from ALL games count for final point total. If tie still exists, coin flip will be used. Teams involved in flip each flip coin with odd person out determined winner. Remaining two teams use head/head competition to determine higher seed. **POINT SYSTEM:** Winning team can earn up to 15 points for win.

11th Annual Kingman Winter MAYB Tournament

5 Boys Division

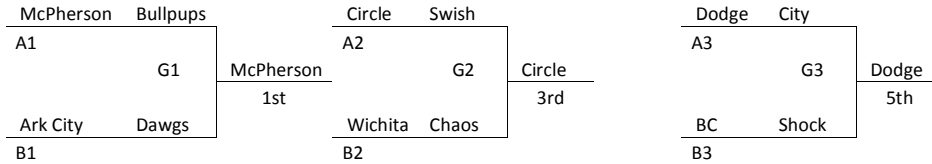
Records in pool play will determine seeding in tournament. In case of tie in pool play, point system will determine seeding. See point system explanation below. Games played at Kingman Middle School (KMS), 607 North Spruce Street, and Kingman High School (Old) and (New), 260 West Kansas Avenue.

- | | |
|-----------------------|-------------------|
| <u>Pool A</u> | <u>Pool B</u> |
| 1) McPherson Bullpups | 4) Wichita Chaos |
| 2) Dodge City Spurs | 5) Ark City Dawgs |
| 3) Circle Swish | 6) BC Shock |

Saturday, February 5

	OLD	NEW	KMS
8 a.m.			
9		1-3	
10	5-6		
11		1-2	
12 p.m.			
1			
2	2-3	4-5	
3			
4			
5	4-6		
6			
7		G1	G3
8			
9	G2		

POINT SYSTEM: Winning team can earn up to 15 points for win. Any win OVER 15 points will count +15 for winner. Points from ALL games count for final point total. If tie still exists, coin flip will be used. Teams involved in flip each flip coin with odd person out determined winner. Remaining two teams use head/head competition to determine higher seed.



11th Annual Kingman Winter MAYB Tournament
5 Girls Division

Records in pool play will determine seeding in tournament. In case of tie in pool play, point system will determine seeding. See point system explanation below.

- 1) Ark City DARE Devils
- 2) Sedgwick Rebels
- 3) Pratt Purple Panthers

All games played at Kingman Middle School, 607 North Spruce Street.

Saturday, February 5

8 a.m.

9 2-3

10

11 1-2

12 p.m.

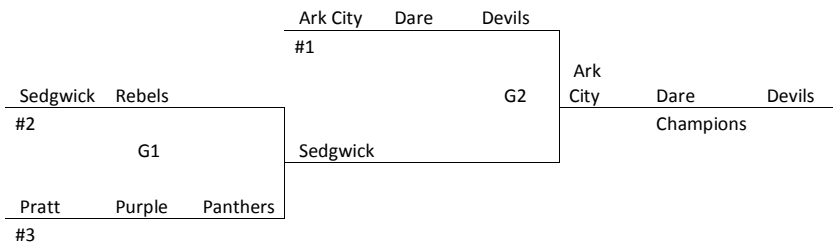
1 1-3

2

3 G1

4

5 G2



POINT SYSTEM: Winning team can earn up to 15 points for win. Any win OVER 15 points will count +15 for winner. Points from ALL games count for final point total. If tie still exists, coin flip will be used. Teams involved in flip each flip coin with odd person out determined winner. Remaining two teams use head/head competition to determine higher seed.

11th Annual Kingman Winter MAYB Tournament

6 Boys Division

Records in pool play will determine seeding in tournament. In case of tie in pool play, point system will determine seeding. See point system explanation below. Games played at Kingman Middle School (KMS), 607 North Spruce Street, and Kingman High School (Old) and (New), 260 West Kansas Avenue.

- | | | |
|--------------------|-----------------------|-------------------------|
| <u>Pool A</u> | <u>Pool B</u> | <u>Pool C</u> |
| 1) Augusta Bombers | 4) Holcomb Hurricanes | 7) Nickerson Rockhounds |
| 2) Hutch Hawks | 5) Pratt Greenbacks | 8) Spearville Lancers |
| 3) KS Blues | 6) Wichita Jaguars | 9) El Dorado Attack |

Saturday, February 5

	OLD	NEW	KMS
8 a.m.	1-2	5-6	
9	7-9		
10		1-3	
11	7-8		
12 p.m.			
1	4-5	8-9	
2			
3			
4	2-3	4-6	
5			
6		G3	G1
7	G2		
8	G4	G5	
9		G6	

Any win OVER 15 points will count +15 for winner. Points from ALL games count for final point total. If tie still exists, coin flip will be used. Teams involved in flip each flip coin with odd person out determined winner. Remaining two teams use head/head competition to determine higher seed. **POINT SYSTEM:** Winning team can earn up to 15 points for win.

