

K C PREMIERE / MAYB BASKETBALL TOURNAMENT

6TH / 7TH GRADE GIRLS DIVISION

POOL A

- (1) TEAM FOCUS 6
- (2) OLATHE BULLDOGS
- (3) THUNDER

<u>W</u>	<u>L</u>
II	II
I	I

POOL B

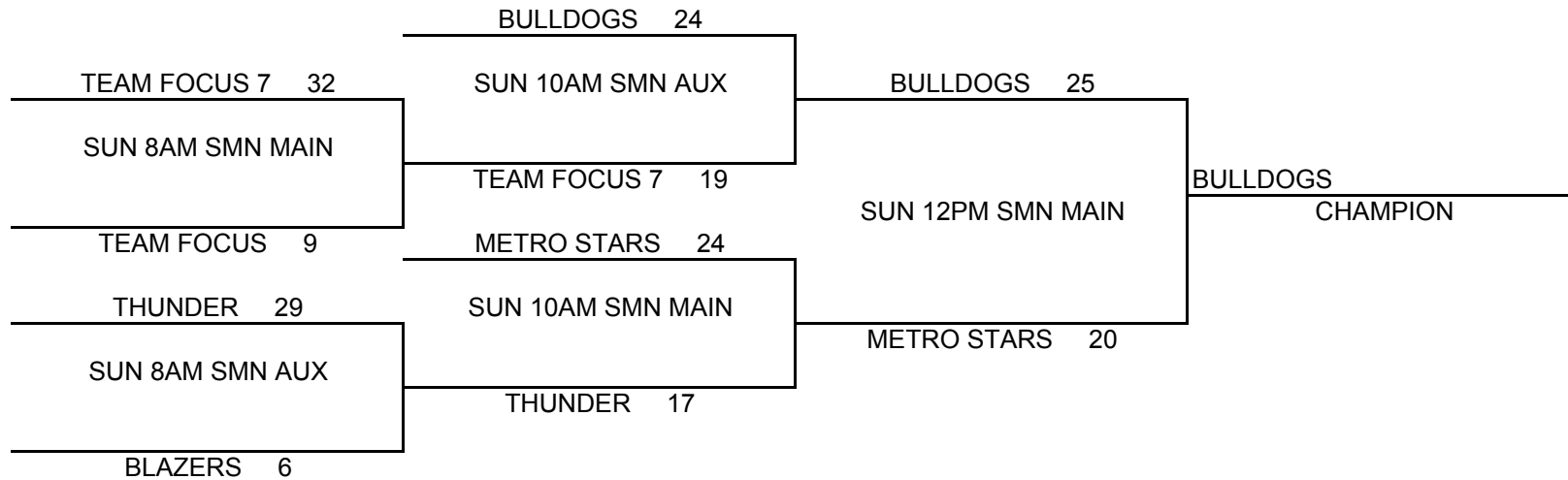
- (1) KC METRO STARS
- (2) MV BLAZERS
- (3) TEAM FOCUS 7

<u>W</u>	<u>L</u>
II	II
I	I

POOL PLAY SCHEDULE

A1	VS	A2	SAT	4PM	SMN AUX	11-31
B1	VS	B2	SAT	5PM	SMN AUX	40-9
A1	VS	A3	SAT	6PM	SMN MAIN	23-25
B1	VS	B3	SAT	7PM	SMN AUX	34-20
A2	VS	A3	SAT	8PM	SMN AUX	35-1
B2	VS	B3	SAT	9PM	SMN AUX	2-25

CHAMPIONSHIP ROUND



KC Premiere/MAYB Basketball Tournament

7TH GRADE BOYS DIVISION

W L

- (1) JC HOOPS
- (2) KC PREMIERE
- (3) KC DRAGONS
- (4) RAPTORS

III	
I	II
	III
II	I

SCHEDULE

(1)	VS	(2)	SAT 12PM	SMW AUX-2	<table border="1"><tr><td>57</td><td>25</td></tr></table>	57	25
57	25						
(3)	VS	(4)	SAT 12PM	SMW AUX-1	<table border="1"><tr><td>24</td><td>29</td></tr></table>	24	29
24	29						
(1)	VS	(3)	SAT 2 PM	SMW AUX-2	<table border="1"><tr><td>67</td><td>13</td></tr></table>	67	13
67	13						
(2)	VS	(4)	SAT 2 PM	SMW AUX-1	<table border="1"><tr><td>32</td><td>40</td></tr></table>	32	40
32	40						
(1)	VS	(4)	SUN 12PM	SMNW AUX-1	<table border="1"><tr><td>35</td><td>19</td></tr></table>	35	19
35	19						
(2)	VS	(3)	SUN 12PM	SMNW AUX-2	<table border="1"><tr><td>44</td><td>37</td></tr></table>	44	37
44	37						

TIEBREAKER FORMAT:
 HEAD TO HEAD RESULT
 POINT SPREAD (MAX 15)
 DEF. POINTS ALLOWED

KC PREMIERE MAYB TOURNAMENT

7th / 8th Grade Boys Division

<u>POOL A</u>	<u>W</u>	<u>L</u>	<u>POOL B</u>	<u>W</u>	<u>L</u>	<u>POOL C</u>	<u>W</u>	<u>L</u>
(1) CAGERS-BLUE	II		(1) KC DRAGONS		II	(1) FH SHOOTERS	I	I
(2) KC PREMIERE		II	(2) HEAT SELECT	I	I	(2) KS CRUNCH	II	
(3) MOKAN BLACK	I	I	(3) RED RAIDERS	II		(3) CAGERS-WHITE		II

POOL PLAY SCHEDULE

A(1)	VS	A(2)	40-10	SAT	5PM	SM WEST MAIN
B(1)	VS	B(2)	39-44	SAT	4PM	SM WEST AUX-2
C(1)	VS	C(2)	14-70	SAT	4PM	SM WEST AUX-1
A(1)	VS	A(3)	40-17	SAT	7PM	SM WEST MAIN
B(1)	VS	B(3)	24-57	SAT	6PM	SM WEST AUX-2
C(1)	VS	C(3)	15-0	SAT	6PM	SM WEST AUX-1
A(2)	VS	A(3)	30-49	SAT	9PM	SM WEST MAIN
B(2)	VS	B(3)	32-56	SAT	8PM	SM WEST AUX-2
C(2)	VS	C(3)	45-31	SAT	8PM	SM WEST AUX-1

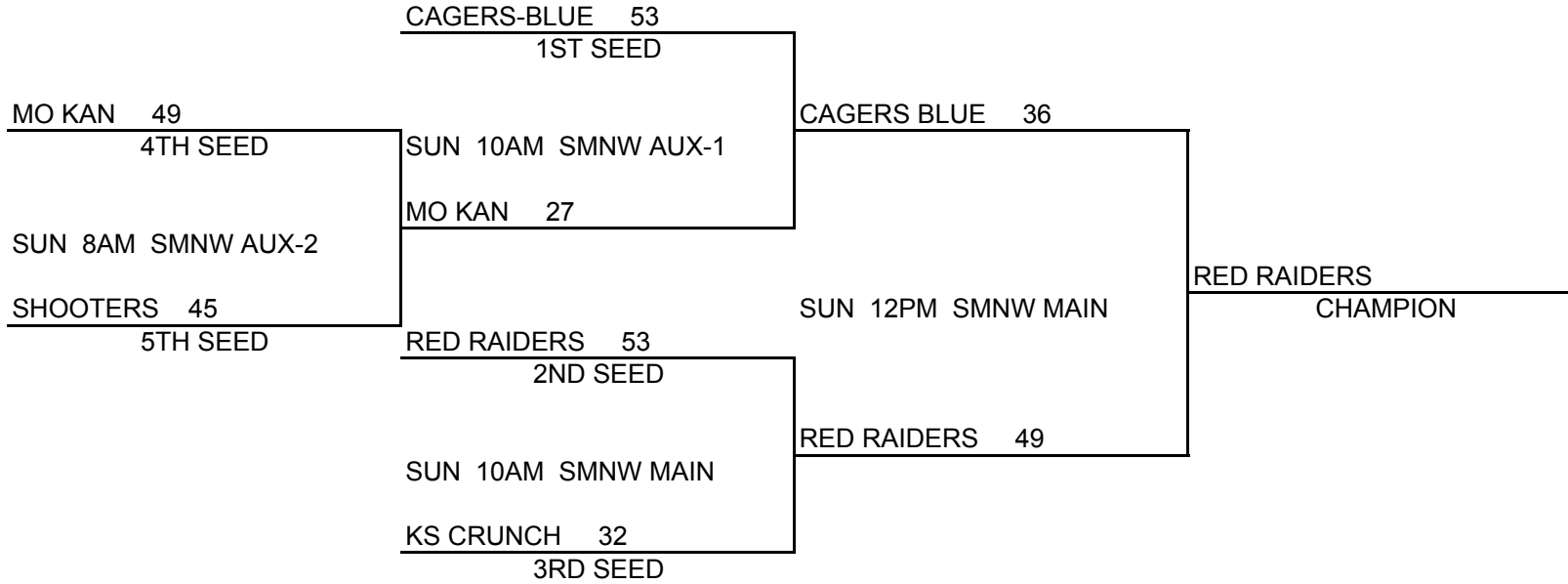
*****PLEASE CLICK ON "BRACKET" TAB IN LOWER LEFT CORNER OF SCREEN TO ACCESS BRACKET SCHEDULE ON SECOND PAGE

SEEDING PROCESS: ALL 2-0 TEAMS WILL BE SEEDED ACCORDING TO POINT SPREAD (MAX 15), THEN 1-1 TEAMS, THEN 0-2 TEAMS
PLEASE CALL KELLY AT 816-590-1685 AFTER THE LAST POOL PLAY GAME AND BEFORE 11PM IF YOU ARE UNSURE OF YOUR SEED

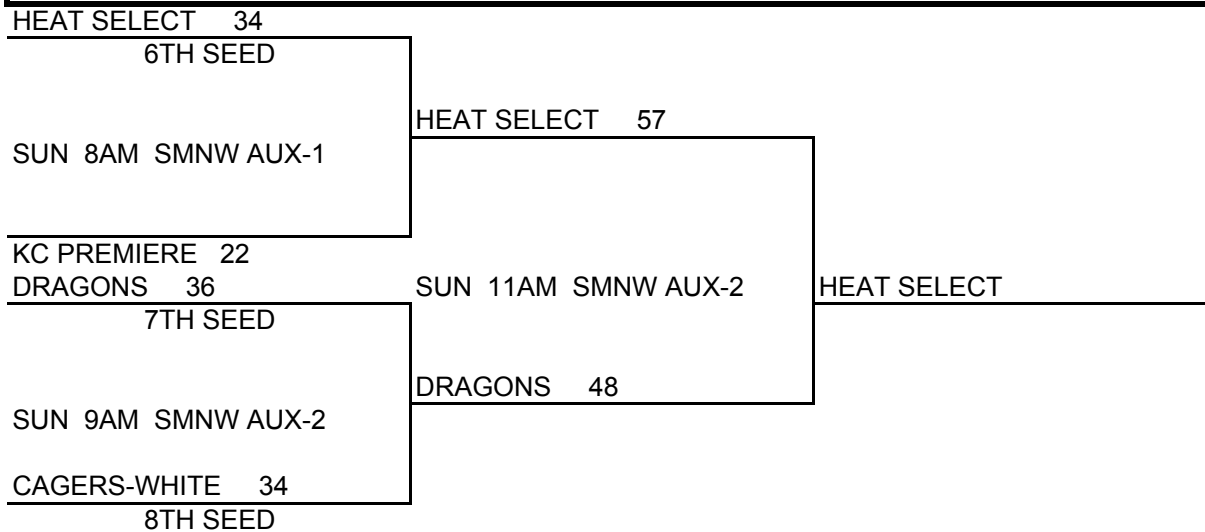
K C Premiere MAYB TOURNAMENT

7th / 8th Grade Boys Division

BRACKET A



BRACKET B



KC Premiere/MAYB Basketball Tournament

8TH GRADE GIRLS DIVISION

W L

- (1) COLUMBIA STORM
- (2) MV BLAZERS
- (3) KC AND ONE
- (4) ALL STARS

I	II
II	I
I	III
II	I

SCHEDULE

(1)	VS	(2)	SAT 1 PM	SMW MAIN	34	35
(3)	VS	(4)	SAT 1 PM	SMW AUX-1	24	38
(1)	VS	(3)	SAT 3 PM	SMW MAIN	30	33
(2)	VS	(4)	SAT 3 PM	SMW AUX-1	35	36
(1)	VS	(4)	SAT 8 PM	SMW MAIN	34	32
(2)	VS	(3)	SUN 10AM	SMNW AUX-2	38	18

TIEBREAKER FORMAT:
 HEAD TO HEAD RESULT
 POINT SPREAD (MAX 15)
 DEF. POINTS ALLOWED

K C PREMIERE / MAYB BASKETBALL TOURNAMENT

9TH / 10TH GRADE BOYS DIVISION

POOL A

- (1) KC AND ONE
- (2) KC PREMIERE
- (3) KANSAS CAGERS

<u>W</u>	<u>L</u>
II	II
I	I

POOL B

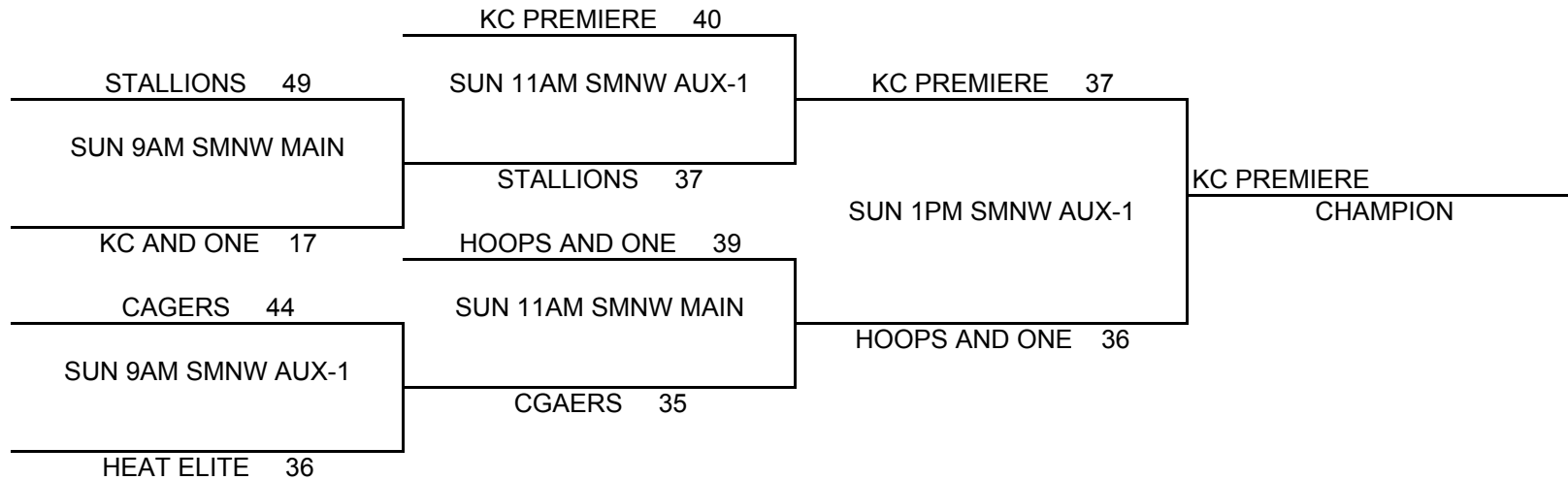
- (1) HOOPS AND ONE
- (2) STALLIONS
- (3) KC HEAT ELITE

<u>W</u>	<u>L</u>
II	I
I	II

POOL PLAY SCHEDULE

A1	VS	A2	SAT	12PM	SMW MAIN	11-51
B1	VS	B2	SAT	1PM	SMW AUX-2	47-35
A1	VS	A3	SAT	2PM	SMW MAIN	79-22
B1	VS	B3	SAT	3PM	SMW AUX-2	50-28
A2	VS	A3	SAT	4PM	SMW MAIN	43-41
B2	VS	B3	SAT	5PM	SMW AUX-2	45-34

CHAMPIONSHIP ROUND



K C PREMIERE / MAYB BASKETBALL TOURNAMENT

9TH / 10TH GRADE GIRLS DIVISION

POOL A

- (1) NW COUGARS
- (2) WARRIOR HOOPS
- (3) KC METRO STARS

<u>W</u>	<u>L</u>
II	
	II
I	I

POOL B

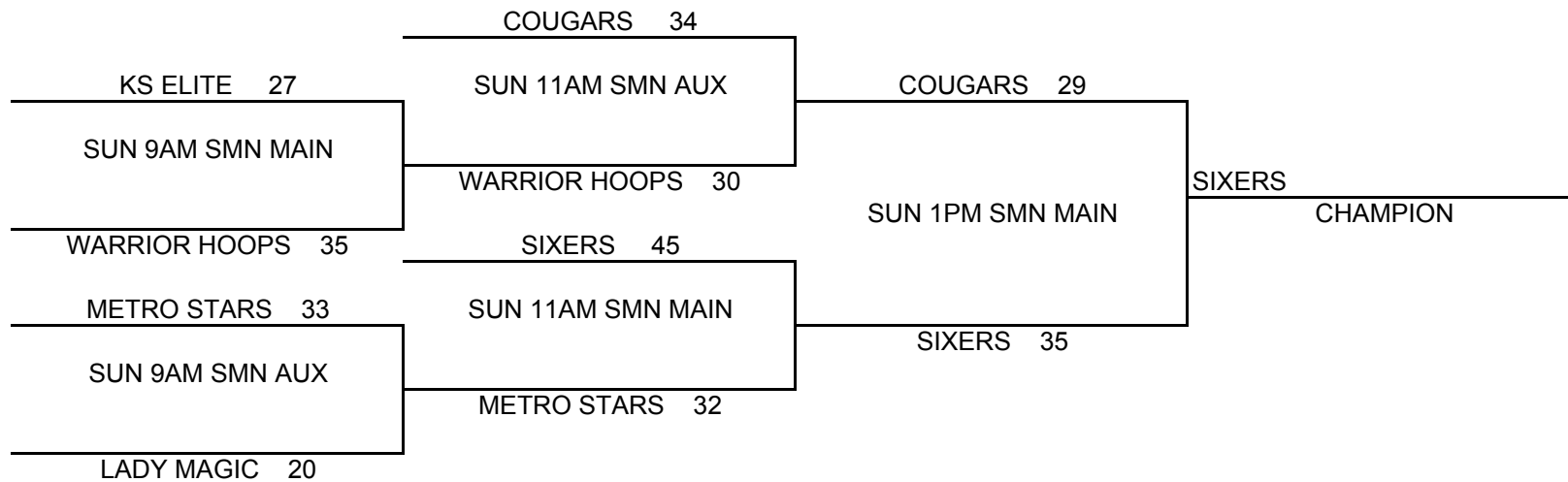
- (1) KANSAS ELITE
- (2) LENEXA SIXERS
- (3) LADY MAGIC

<u>W</u>	<u>L</u>
I	I
II	
	II

POOL PLAY SCHEDULE

A1	VS	A2	SAT	3PM	SMN AUX	43-17
B1	VS	B2	SAT	5PM	SMN MAIN	23-45
A1	VS	A3	SAT	6PM	SMN AUX	33-23
B1	VS	B3	SAT	7PM	SMN MAIN	38-23
A2	VS	A3	SAT	8PM	SMN MAIN	36-51
B2	VS	B3	SAT	9PM	SMN MAIN	53-14

CHAMPIONSHIP ROUND



KC Premiere/MAYB Basketball Tournament

11TH-12TH GRADE BOYS DIVISION

W L

- (1) KC OUTLAWS
- (2) HOOPSQUAD
- (3) KC PREMIERE
- (4) ST. JOE SUNS

III	
I	II
II	I
	III

SCHEDULE

(1)	VS	(2)	SAT 5PM	SMW AUX-1	<table border="1"><tr><td>62</td><td>41</td></tr></table>	62	41
62	41						
(3)	VS	(4)	SAT 6PM	SMW MAIN	<table border="1"><tr><td>61</td><td>38</td></tr></table>	61	38
61	38						
(1)	VS	(3)	SAT 7PM	SMW AUX-1	<table border="1"><tr><td>56</td><td>49</td></tr></table>	56	49
56	49						
(2)	VS	(4)	SAT 7PM	SMW AUX-2	<table border="1"><tr><td>69</td><td>66</td></tr></table>	69	66
69	66						
(1)	VS	(4)	SUN 12PM	SMN AUX	<table border="1"><tr><td>60</td><td>44</td></tr></table>	60	44
60	44						
(2)	VS	(3)	SUN 1PM	SMN AUX	<table border="1"><tr><td>50</td><td>49</td></tr></table>	50	49
50	49						

TIEBREAKER FORMAT:
 HEAD TO HEAD RESULT
 POINT SPREAD (MAX 15)
 DEF. POINTS ALLOWED