

K C PREMIERE / MAYB BASKETBALL TOURNAMENT

8TH GRADE BOYS DIVISION

POOL A

- (1) KC PREMIERE
- (2) RED RAIDERS
- (3) SOUTH LINCOLN SWISH

<u>W</u>	<u>L</u>
I	I
II	
	II

POOL B

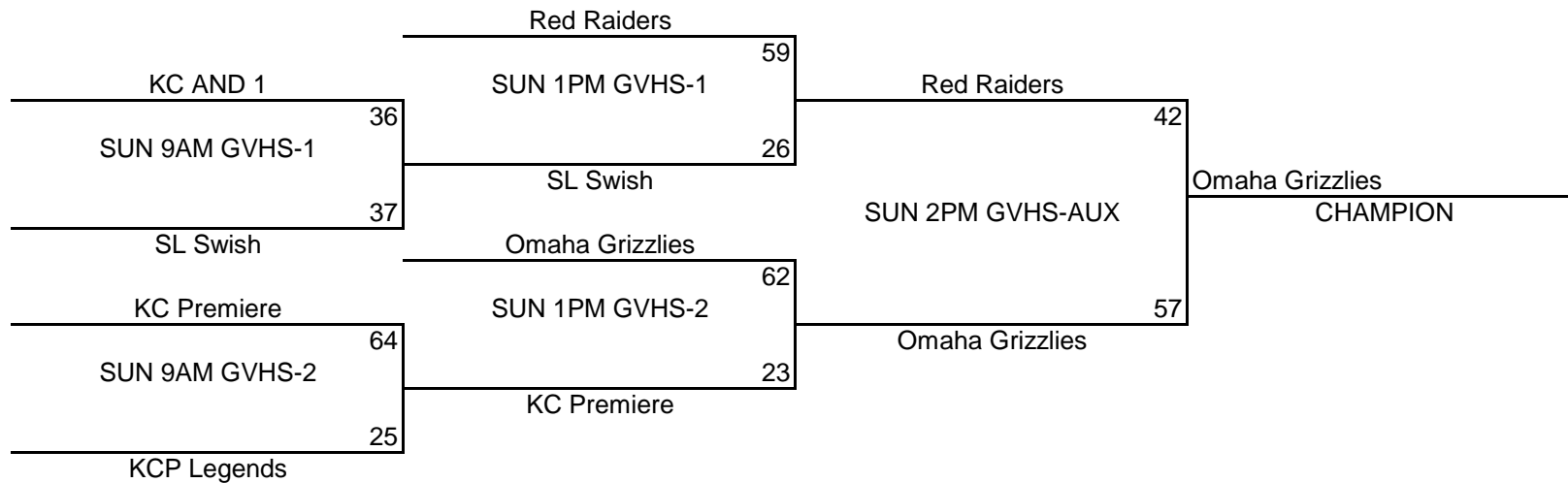
- (1) OMAHA GRIZZLIES
- (2) KCP LEGENDS
- (3) KC AND ONE

<u>W</u>	<u>L</u>
II	
	II
I	I

POOL PLAY SCHEDULE

1A	VS	2A	SAT	5PM	44-47	GVHS-AUX
1B	VS	2B	SAT	4PM	43-24	GVHS-AUX
1A	VS	3A	SAT	6PM	66-21	GVHS-AUX
1B	VS	3B	SAT	6PM	56-29	GVHS-2
2A	VS	3A	SAT	8PM	52-25	GVHS-2
2B	VS	3B	SAT	8PM	23-50	GVHS-AUX

CHAMPIONSHIP ROUND



K C PREMIERE / MAYB BASKETBALL TOURNAMENT

5TH/6TH GRADE GIRLS DIVISION

POOL A

- (1) LEE'S SUMMIT SHOOTERS
- (2) SOUTH LINCOLN SWISH
- (3) GODDARD KS XPLOSION

<u>W</u>	<u>L</u>
I	I
	II
II	

POOL B

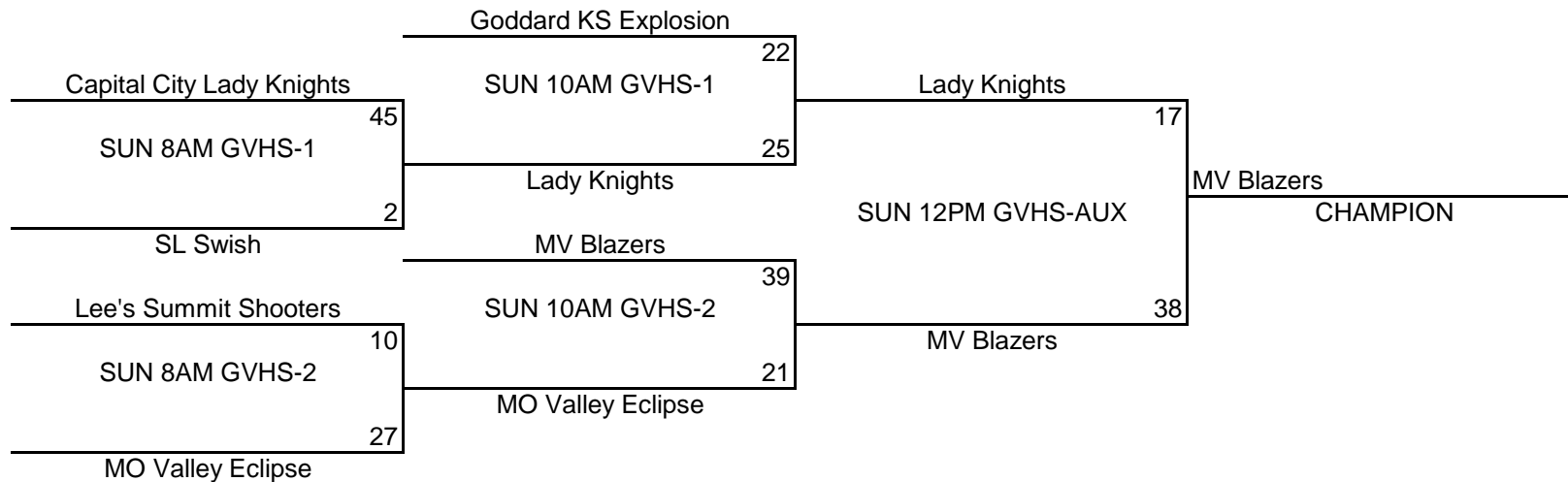
- (1) MO VALLEY BLAZERS
- (2) CAPITAL CITY LADY KNIGHTS
- (3) MO VALLEY ECLIPSE

<u>W</u>	<u>L</u>
II	
I	I
	II

POOL PLAY SCHEDULE

1A	VS	2A	SAT	3PM	34-0	GVHS-1
1B	VS	2B	SAT	3PM	34-26	GVHS-2
1A	VS	3A	SAT	5PM	13-15	GVHS-1
1B	VS	3B	SAT	5PM	39-12	GVHS-2
2A	VS	3A	SAT	7PM	6-32	GVHS-1
2B	VS	3B	SAT	7PM	36-27	GVHS-2

CHAMPIONSHIP ROUND



KC Premiere/MAYB Basketball Tournament

6TH/7TH GRADE BOYS DIVISION

W L

- (1) KC NETS WHITE 6
- (2) RED RAIDERS 6
- (3) KC PREMIERE 6/7
- (4) KCP LEGENDS 6/7

II	I
III	
	III
I	II

SCHEDULE

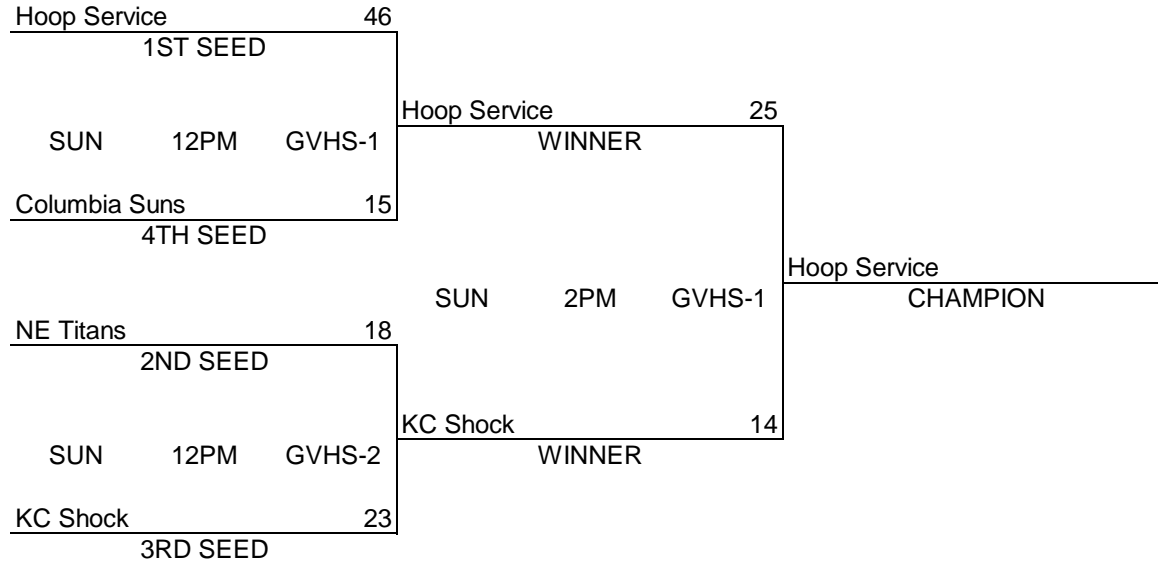
(1)	VS	(2)	SAT 10AM	GVHS-1	<table border="1"><tr><td>28</td><td>46</td></tr></table>	28	46
28	46						
(3)	VS	(4)	SAT 10AM	GVHS-2	<table border="1"><tr><td>17</td><td>18</td></tr></table>	17	18
17	18						
(1)	VS	(3)	SAT 12PM	GVHS-1	<table border="1"><tr><td>42</td><td>22</td></tr></table>	42	22
42	22						
(2)	VS	(4)	SAT 12PM	GVHS-2	<table border="1"><tr><td>46</td><td>6</td></tr></table>	46	6
46	6						
(1)	VS	(4)	SAT 2 PM	GVHS-1	<table border="1"><tr><td>43</td><td>25</td></tr></table>	43	25
43	25						
(2)	VS	(3)	SAT 2 PM	GVHS-2	<table border="1"><tr><td>42</td><td>27</td></tr></table>	42	27
42	27						

TIEBREAKER FORMAT:
 HEAD TO HEAD RESULT
 POINT SPREAD (MAX 15)
 DEF. POINTS ALLOWED

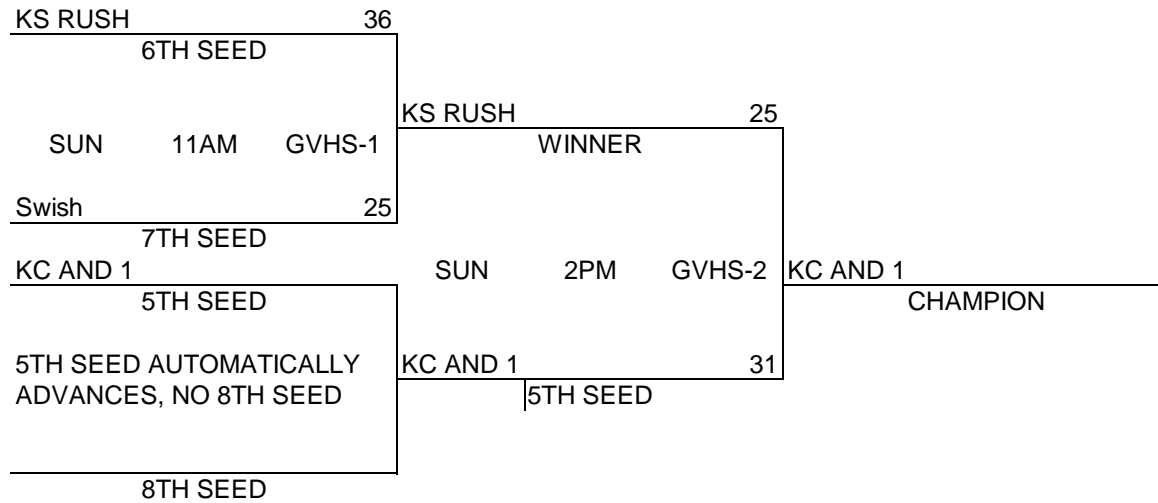
KC PREMIERE MAYB TOURNAMENT

7TH/8TH GIRLS DIVISION

BRACKET A



BRACKET B



K C PREMIERE / MAYB BASKETBALL TOURNAMENT

7TH GRADE BOYS DIVISION

POOL A

- (1) KC NETS BLUE 6TH
- (2) RED RAIDERS II
- (3) MO OUTLAWZ

<u>W</u>	<u>L</u>
I	I
II	
	II

POOL B

- (1) HOOP SERVICE
- (2) MO PANTHERS
- (3) BW BLUE JAYS

<u>W</u>	<u>L</u>
II	
	II
I	I

POOL PLAY SCHEDULE

1A	VS	2A	SAT	11AM	44-46	GVHS-1
1B	VS	2B	SAT	11AM	38-18	GVHS-AUX
1A	VS	3A	SAT	1PM	39-36	GVHS-1
1B	VS	3B	SAT	1PM	52-41	GVHS-AUX
2A	VS	3A	SAT	3PM	41-34	GVHS-AUX
2B	VS	3B	SAT	4PM	26-31	GVHS-1

CHAMPIONSHIP ROUND

