

**2010 MAYB Boys Nationals
8th Grade Boys**

Pool A	W	L	Pool B	W	L	Pool C	W	L
1. KS- Wichita Redhawks			5. TX – Texas Hotshots Black			9. KS- Cagerz		
2. TX- Team Legacy			6. AR- SW Little Rock Bulls			10. KS – Wichita Runnin’ Rebels		
3. MO-Bulls			7. CO-Pine Creek			11. OK- Bartlesville Bruins		
4. OK- Explosion			8. OK- Heat			12. TX- Austin Wildcats		

Pool D	W	L	Pool E	W	L	Pool F	W	L
13. CO- Chauncey Billups Elite BBA			17. KS- Wichita Rebels			21. CO- Miners		
14. NE- Cornhusker Shooting Stars			18. OK- Tulsa Elite			22. KS- Hays Indians		
15. MO- Magic North			19. IL- Chicago Hoop Squad			23. TX- Tigers		
16. KS- Panthers			20. MO-KC Keys			24. MO- Columbia Orange		

Pool G	W	L	Pool H	W	L	Pool I	W	L
25. KS- Spiece MoKan-Top City			29. TX Metro Mustangs 2014			33. KS- Players		
26. TX- Sequin Hoops			30. MO- Columbia Orange 2			34. OK- Orange Celtics		
27. OK- Tulsa D Xtreme			31. OK- OKC Bobcats			35. MO- Flight		
28. KS- KC Legacy			32. KS- Team Maximize Orange			36. AR- N Little Rock War Eagles		

Pool J	W	L	Pool K	W	L	Pool L	W	L
37. KS- Lawrence Cougars			41. OK- Norman Elite			45. OK- Tulsa Rush		
38. TX- Texas Hotshots 2014			42. NE-Omaha Ramblers			46. KS- Heat Elite		
39. MO- Rebels			43. MO- JBBA			47. MO- Warrior Hoops		
40. CO- Chauncey Billups Academy			44. AR- Rim Reapers			48. KS- Wichita Mustangs		
			50. OK- Antioch Saints			49. TX- DSW Elite 2014		

*Please make sure to click the refresh button on your internet browser to ensure you have the most up to date schedule.
We are a Grade based organization! Please make sure you have Grade Verification with you at the tournament!*

Check in locations available:

Wichita State University – 1pm – 10pm on Thurs and 8am – 12pm on Friday

Farha Center – 5pm – 10pm on Thursday August 5th

Farha Center – 8am – 12pm on Friday August 6th

**2010 MAYB Boys Nationals
8th Grade Boys**

Thursday	Ca HS 1	Ca HS 2	HMS W	HMS 1	HMS 2	CL HS 1	CL HS 2	Farha 2	Farha 3	Farha 4	WSU 1	WSU 2	WSU 3
6:00													
7:00													
8:00													
9:00													
Friday	Ca HS 1	Ca HS 2	HMS W	HMS 1	HMS 2	CL HS 1	CL HS 2	Farha 2	Farha 3	Farha 4	WSU 1	WSU 2	WSU 3
9:00	41-42	43-44	5-6	9-10	11-12	13-14	-						
10:05	45-46	47-48	7-8	21-22	23-24	25-26	15-16						
11:10	41-43	42-50	33-34	1-2	3-4	17-18	19-20						
12:15	45-47	46-49	35-36	29-30	31-32	37-38	26-28						
1:20	5-7	6-8	9-11	1-3	2-4	25-27	39-40						
2:25	21-23	22-24	10-12	29-31	30-32	13-15	14-16						
3:30	46-48	45-49	42-44	41-50	33-35	17-19	18-20						
4:35	1-4	2-3	5-8	6-7	34-36	14-15	26-27						
5:40	9-12	10-11	41-44	13-16	25-28	37-39	38-40						
6:45	45-48	47-49	43-50	21-24	22-23	17-20	18-19						
7:50	29-32	30-31	33-36	34-35	27-28	37-40	38-39						
8:55	46-47	48-49	44-50	42-43									
10:00													
Saturday	Ca HS 1	Ca HS 2	HMS W	HMS 1	HMS 2	CL HS 1	CL HS 2	Farha 2	Farha 3	Farha 4	WSU 1	WSU 2	WSU 3
8:00													
9:05	G1	G2	G4			G5	G6						
10:10	G7	G8	G9			G10	G11						
11:15	G3	G18	G12			G13	G14						
12:20	G15	G16	G17			G22	G21						
1:25	G20	G19	G23			G26	G27						
2:30	G24	G28	G25			G29	G30						
3:35	G32	G31	G33			-							
4:40	-	-	G34			G36							
5:45	G38	G37	G35			G40							
6:50	G39		G41										
7:55			G42										
9:00													
10:00													
Sunday	Ca HS 1	Ca HS 2	HMS W	HMS 1	HMS 2	CL HS 1	CL HS 2	Farha 2	Farha 3	Farha 4	WSU 1	WSU 2	WSU 3
8:00								G43	G44	G46	G45		
9:05								G51	G52	G53			
10:10								G54					
11:15								G57	G58				G47
12:20								G55	G56				G48
1:25								G60	G59				
2:30								G61				G49	
3:35											G50		
4:40													
5:45													
6:50													

CaHS 1 and 2 = Campus High School
HMS 1 and 2 = Haysville Middle School
CL HS 1 and 2 = Clearwater High School

HMS W = Haysville Middle School West
WSU 1, 2 and 3 = Wichita State University
Farha 1-4 = Farha Sports Complex (SW YMCA)

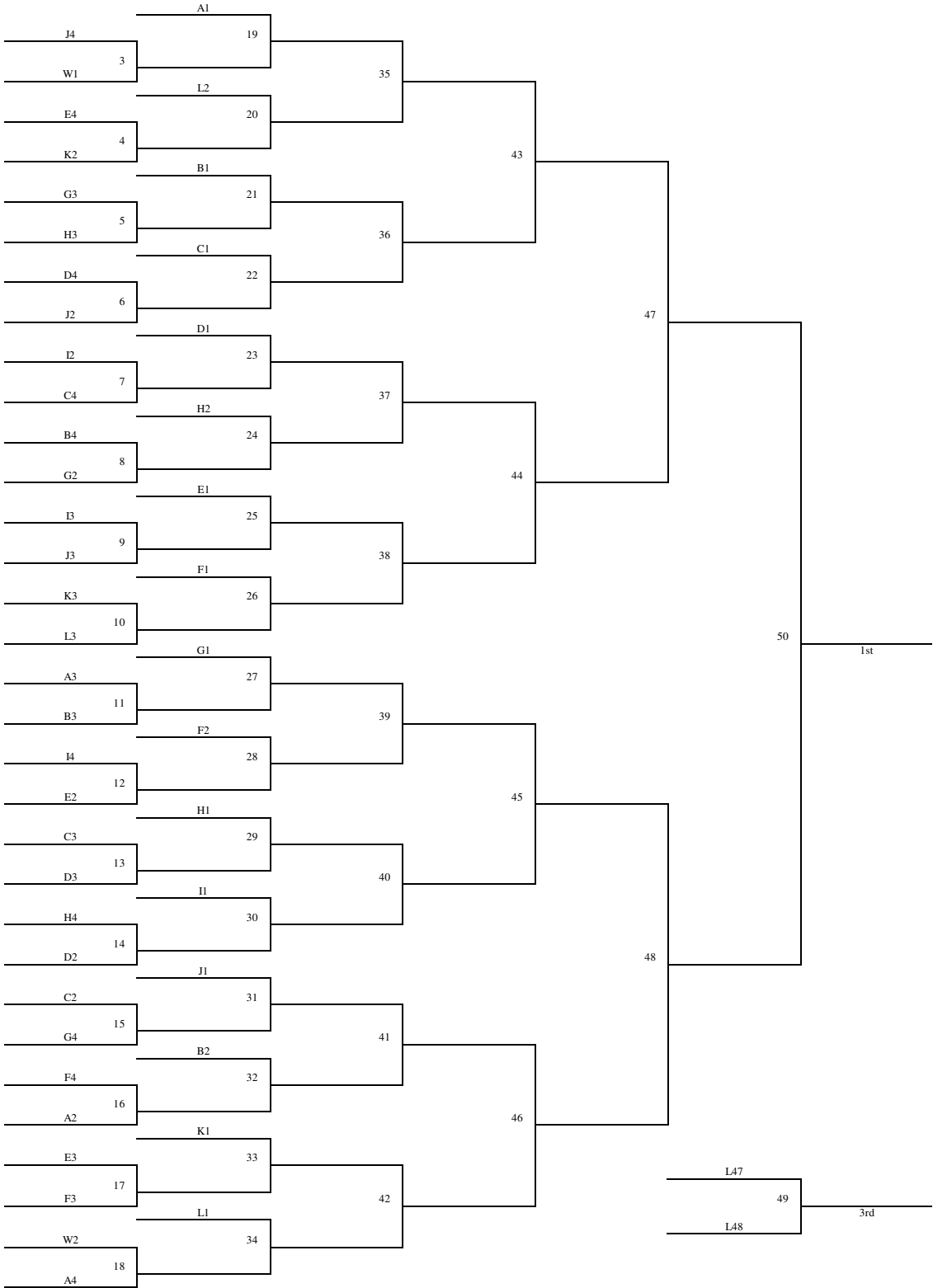
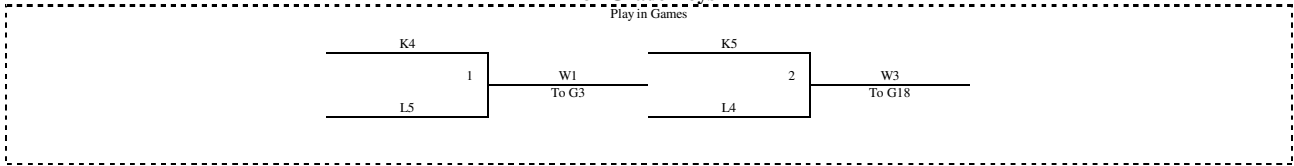
*Please make sure to click the refresh button on your internet browser to ensure you have the most up to date schedule.
We are a Grade based organization! Please make sure you have Grade Verification with you at the tournament!*

Check in locations available:
Wichita State University – 1pm – 10pm on Thurs and 8am – 12pm on Friday
Farha Center – 5pm – 10pm on Thursday August 5th
Farha Center – 8am – 12pm on Friday August 6th

2010 MAYB Boys Nationals

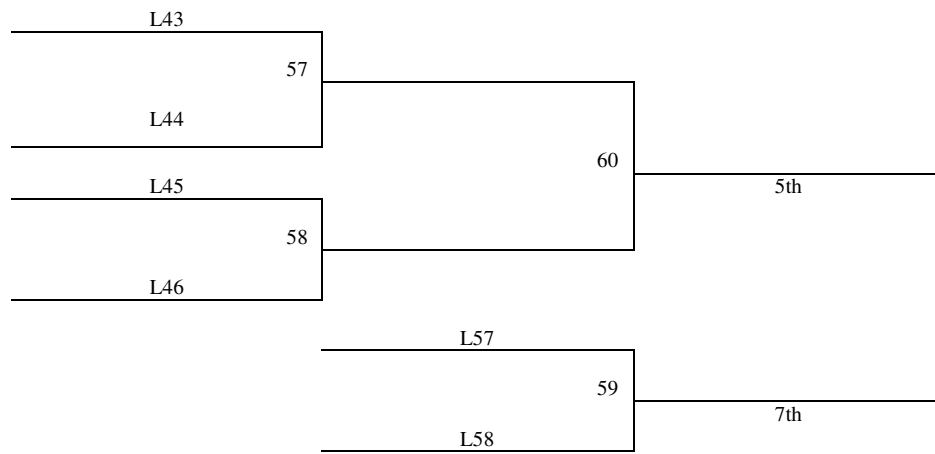
8th Grade Boys

Play in Games

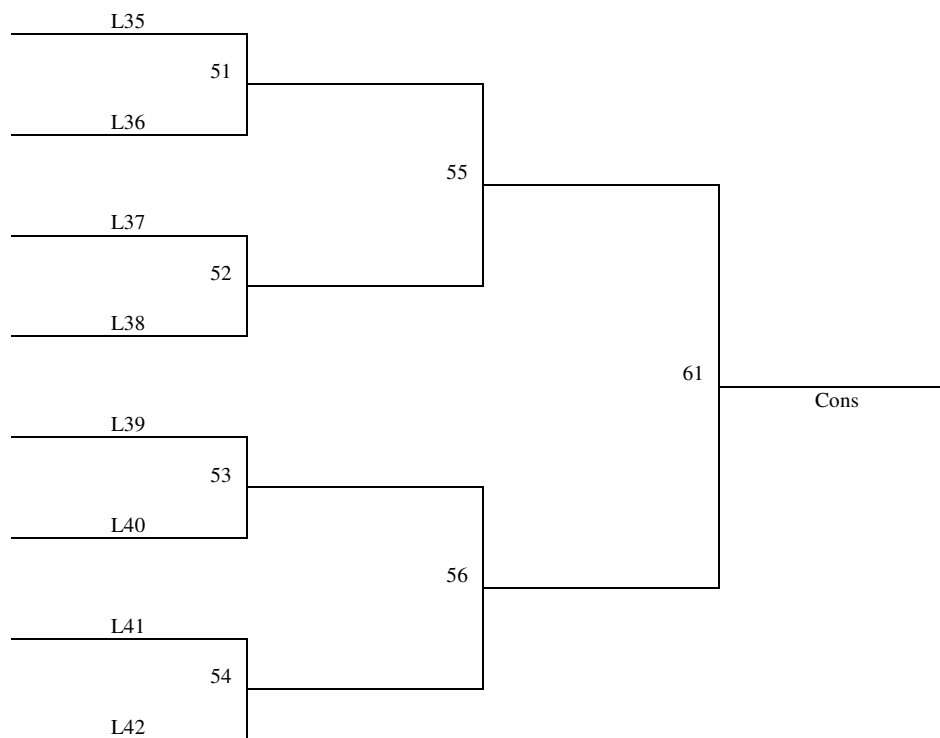


2010 MAYB Boys Nationals
8th Grade Boys

5th - 8th Place Games



Consolation Bracket



Gym Directions

2010 Boys' Nationals

Listed below are the addresses and directions for the various playing sites for the Boys' National Tournament. We recommend that you take the physical address of the gyms listed below and plug it into maps.yahoo.com to get specific directions from the location that you are traveling from. We have also listed general directions on subsequent pages. Please allow travel time to locate your playing site. If you have specific questions, do not hesitate to call our office at 316-284-0354, and do not hesitate to ask local people for specific directions.

<u>Gym</u>	<u>Address</u>
Andover Central High School	603 E. Central Ave., Andover, KS 67002
Andover Central MS	903 E. Central, Andover, KS 67002
Andover High School	1744 N. Andover Rd., Andover, KS 67002
Augusta Middle School	1001 State St., Augusta, KS 67010
Bluestem Middle School	625 South Mill Road., Leon, KS 67074
Bluestem High School	500 Bluestem Dr., Leon, KS 67074
Campus High School	2100 W 55th St S Wichita, KS 67217
Circle High School	905 Main St. Towanda, KS 67144
Circle Middle School (located in Benton, KS)	14697 SW 20 th , Benton, KS 67017
Clearwater High School	1201 East Ross Ave., Clearwater, KS 67026
El Dorado Recreation Center/ High School	401 McCollum Road, El Dorado, KS 67042
Farha Center (West Wichita YMCA Campus)	3405 S. Meridian Ave., Wichita, KS 67217
Halstead High School	521 West 6 th St., Halstead, KS 67056
Halstead Middle School	520 West 6 th St., Halstead, KS 67056
Haysville Middle School	900 W. Grand Ave., Haysville, KS 67060
Haysville West Middle School	1956 W. Grand Ave, Haysville, KS 67060
Wichita East High School	2301 East Douglas Ave., Wichita, KS 67211
Wichita State University	1845 N. Fairmount, Wichita, KS 67260